



Name \_\_\_\_\_ Class \_\_\_\_\_ Date \_\_\_\_\_

### Match each of the following terms to its definition:

Invertebrate

Mantle

Mycelium

Kidneys

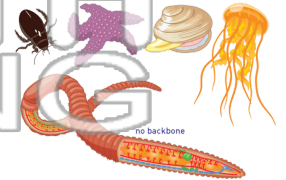
Millipede

Kingdom

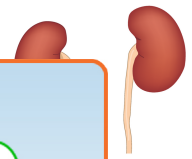
Molting

Metamorphosis

1. \_\_\_\_\_ - animal that does not have a backbone; some of the major groups of invertebrates are cnidarians, arthropods, worms and mollusks



2. \_\_\_\_\_ - organs that filter the blood and remove wastes; they produce urine



3. \_\_\_\_\_ and the t kingdom

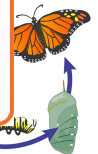


4. \_\_\_\_\_ the core is made



5. \_\_\_\_\_ and form organism

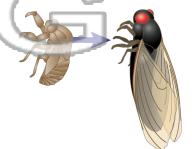
Please [Sign In](#) or [Sign Up](#) to download the printable version of this worksheet



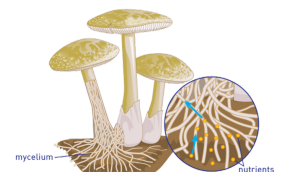
6. \_\_\_\_\_ - a segmented arthropod with two pairs of legs attached to each body segment



7. \_\_\_\_\_ - a process of an arthropod that sheds its exoskeleton and grows a new, larger exoskeleton that will fit the growing organism



8. \_\_\_\_\_ - a mass of fungal hyphae that absorbs nutrients





Name \_\_\_\_\_ Class \_\_\_\_\_ Date \_\_\_\_\_

**Match each of the following terms to its definition:**

Invertebrate

Mantle

Mycelium

Kidneys

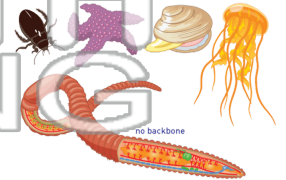
Millipede

Kingdom

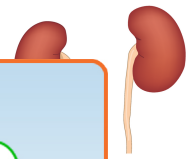
Molting

Metamorphosis

**1. invertebrate** - animal that does not have a backbone; some of the major groups of invertebrates are cnidarians, arthropods, worms and mollusks



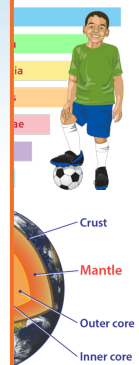
**2. kidneys** - organs that filter the blood and remove wastes; they produce urine



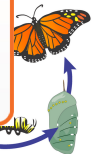
**3. kingdom** - the taxonomic rank of a group of animals, plants, fungi, or protists



**4. mantle** - the tissue layer that covers the body of a mollusk and is the source of the shell



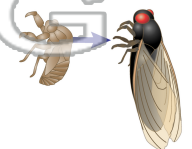
**5. metamorphosis** - a biological process by which an organism physically changes its form



**6. millipede** - a segmented arthropod with two pairs of legs attached to each body segment



**7. molting** - a process of an arthropod that sheds its exoskeleton and grows a new, larger exoskeleton that will fit the growing organism



**8. mycelium** - a mass of fungal hyphae that absorbs nutrients



**PREVIEW**

Please [Sign In](#) or [Sign Up](#) to download the printable version of this worksheet