



Name _____ Class _____ Date _____

Match each of the following terms to its definition:

Protista

Protozoa

Pupa

Nymph

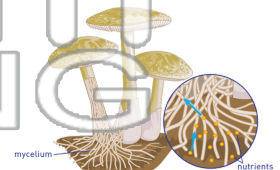
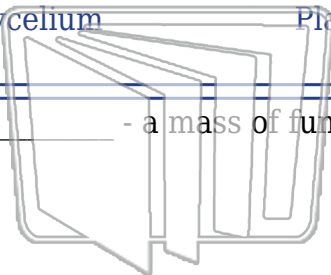
Mycelium

Plant life cycle

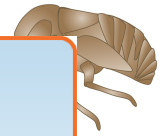
Open-circulatory system

Phloem

1. _____ - a mass of fungal hyphae that absorbs nutrients



2. _____ - a stage of gradual metamorphosis when the egg hatches and the larva resembles the adult insect



3. _____ bathes the



4. _____ parts of the

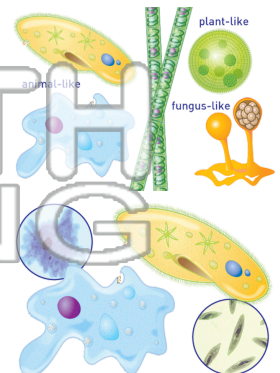
5. _____

PREVIEW
Please [Sign In](#) or [Sign Up](#) to download the printable version of this worksheet

6. _____ - a kingdom of scientific classification which includes organisms that are mostly unicellular, their cells have a nucleus, some make their own food while others need to get their food from other sources (for example - amoebas); single-celled or many-celled

7. _____ - single-celled, animal-like protist that has the ability to move

8. _____ - the larva will be encased in a protective covering where it will develop into the adult form of the insect





Name _____ Class _____ Date _____

Match each of the following terms to its definition:

Protista

Protozoa

Pupa

Nymph

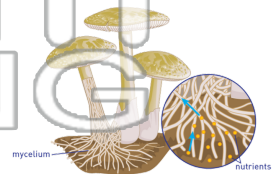
Mycelium

Plant life cycle

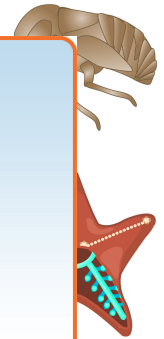
Open-circulatory system

Phloem

1. **mycelium** - a mass of fungal hyphae that absorbs nutrients



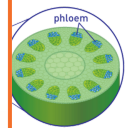
2. **nymph** - a stage of gradual metamorphosis when the egg hatches and the larva resembles the adult insect



3. **open-vessels** a



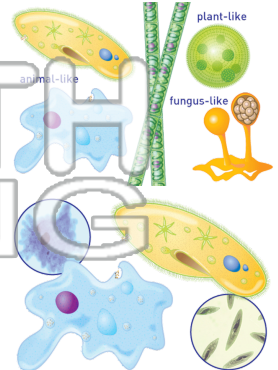
4. **phloe** the plant



5. **plant**

PREVIEW
Please [Sign In](#) or [Sign Up](#) to download the printable version of this worksheet

6. **protista** - a kingdom of scientific classification which includes organisms that are mostly unicellular, their cells have a nucleus, some make their own food while others need to get their food from other sources (for example - amoebas); single-celled or many-celled



7. **protozoa** - single-celled, animal-like protist that has the ability to move

8. **pupa** - the larva will be encased in a protective covering where it will develop into the adult form of the insect

