



Name _____ Class _____ Date _____

Match each of the following terms to its definition:

- Appendicular skeleton Endocrine glands Axial skeleton Cardiac muscle
 Homeostasis Hormones Central nervous system Cartilage

1. _____ - a part of the skeleton composed of 126 bones found in the flexible regions of the body, including shoulders, hips and limbs

2. _____ - the central, anchoring part of the bony skeleton that consists of the skull, backbone (vertebrae) and rib cage

3. _____ repeated involuntary

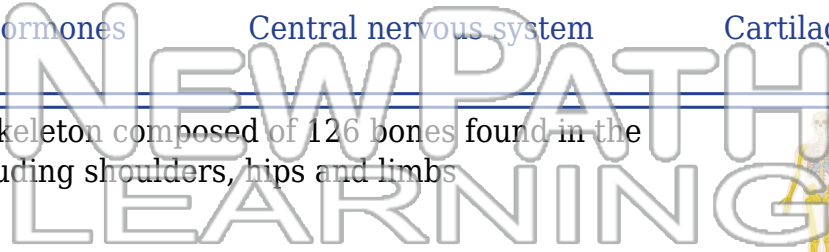
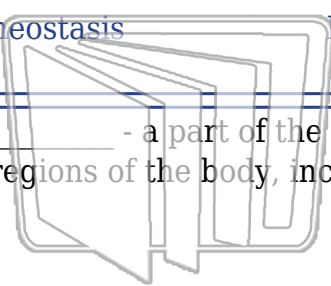
4. _____ than bone

5. _____ occurs

6. _____ - glands found throughout the human body that act to control body functions by releasing hormones into the bloodstream

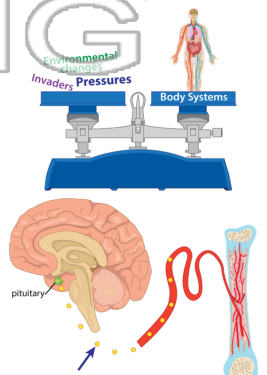
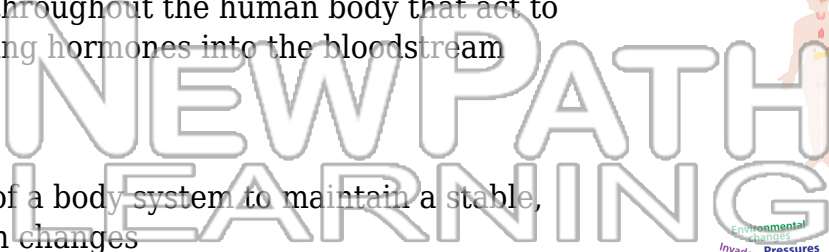
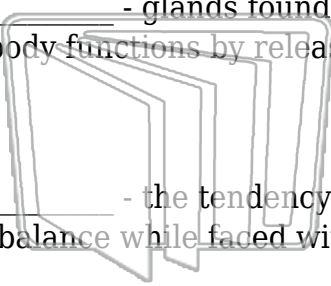
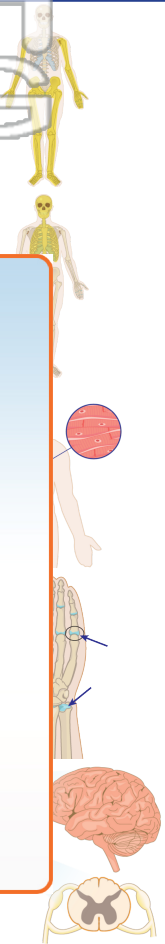
7. _____ - the tendency of a body system to maintain a stable, internal balance while faced with changes

8. _____ - chemicals released by endocrine glands that control a wide variety of functions within the human body



PREVIEW

Please [Sign In](#) or [Sign Up](#) to download the printable version of this worksheet





Name _____ Class _____ Date _____

Match each of the following terms to its definition:

- | | | | |
|-----------------------|------------------|------------------------|----------------|
| Appendicular skeleton | Endocrine glands | Axial skeleton | Cardiac muscle |
| Homeostasis | Hormones | Central nervous system | Cartilage |

1. **appendicular skeleton** - a part of the skeleton composed of 126 bones found in the flexible regions of the body, including shoulders, hips and limbs

2. **axial skeleton** - the central, anchoring part of the bony skeleton that consists of the skull, backbone (vertebrae) and rib cage

3. **cardiac muscle** - that repeats involuntarily

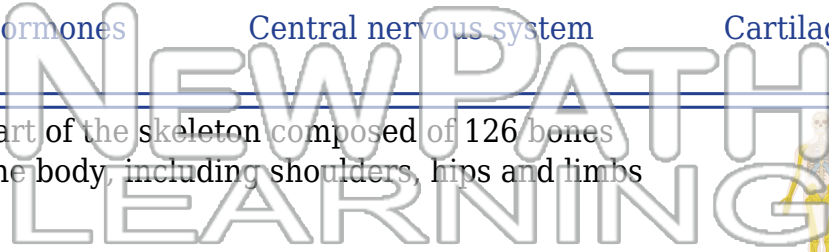
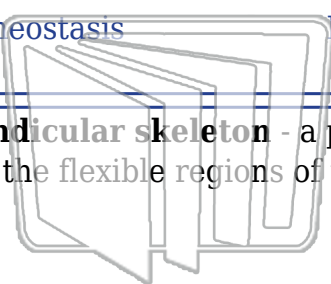
4. **cartilage** - bone

5. **central nervous system** - function

6. **endocrine glands** - glands found throughout the human body that act to control body functions by releasing hormones into the bloodstream

7. **homeostasis** - the tendency of a body system to maintain a stable, internal balance while faced with changes

8. **hormones** - chemicals released by endocrine glands that control a wide variety of functions within the human body




PREVIEW

Please [Sign In](#) or [Sign Up](#) to download the printable version of this worksheet

