



Name \_\_\_\_\_ Class \_\_\_\_\_ Date \_\_\_\_\_

### Match each of the following terms to its definition:

Transform boundary

Seismograph

Subduction

Radiation

Asthenosphere

Sea-floor spreading

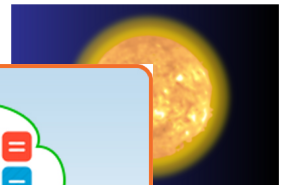
Plate tectonics theory

Tectonic plates

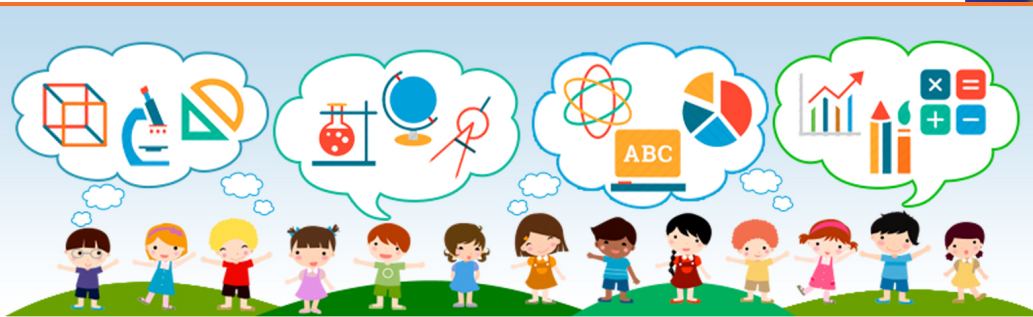
1. \_\_\_\_\_ - the theory that the uppermost part of the Earth's mantle and the crust are divided into geologic plates that move relative to one another over time



2. \_\_\_\_\_ - heat that is transferred through space



3. \_\_\_\_\_ from each



4. \_\_\_\_\_ seismic v

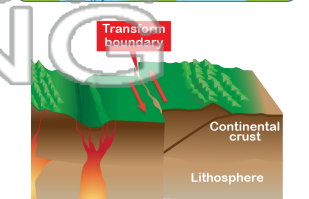
5. \_\_\_\_\_ another t

**PREVIEW**  
Please [Sign In](#) or [Sign Up](#) to download the printable version of this worksheet

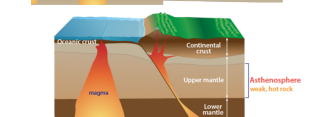
6. \_\_\_\_\_ - individual pieces of the Earth's lithosphere that move relative to one another



7. \_\_\_\_\_ - a boundary where two tectonic plates slide past one another, often causing earthquakes



8. \_\_\_\_\_ - the weaker, upper portion of the Earth's mantle





Name \_\_\_\_\_ Class \_\_\_\_\_ Date \_\_\_\_\_

**Match each of the following terms to its definition:**

Transform boundary

Seismograph

Subduction

Radiation

Asthenosphere

Sea-floor spreading

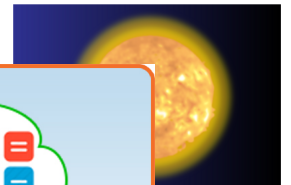
Plate tectonics theory

Tectonic plates

**1. plate tectonics theory** - the theory that the uppermost part of the Earth's mantle and the crust are divided into geologic plates that move relative to one another over time



**2. radiation** - heat that is transferred through space



**3. sea-floor spreading** - the process by which new oceanic crust is formed at mid-ocean ridges and then moves away from the ridge



**4. seismic waves** - vibrations that travel through the Earth's crust, often caused by earthquakes

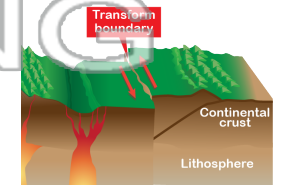
**5. subduction** - the process by which one tectonic plate moves under another and sinks into the mantle

**PREVIEW**  
Please [Sign In](#) or [Sign Up](#) to download the printable version of this worksheet

**6. tectonic plates** - individual pieces of the Earth's lithosphere that move relative to one another



**7. transform boundary** - a boundary where two tectonic plates slide past one another, often causing earthquakes



**8. asthenosphere** - the weaker, upper portion of the Earth's mantle

