



Name _____ Class _____ Date _____

Match each of the following terms to its definition:

Fertilization

Dermis

Allergic reaction

Antibody

Antigen

Embryo

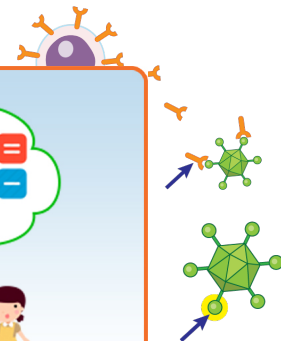
Epidermis

Fetus

1. _____ - an overreaction by the body's immune system when a person is exposed to certain materials such as dust, pollen, latex, or certain foods



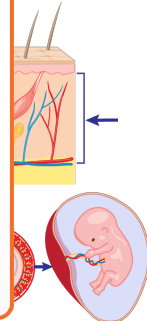
2. _____ - a protein produced by B lymphocytes that attaches to an antigen and leads to its removal



3. _____ the body



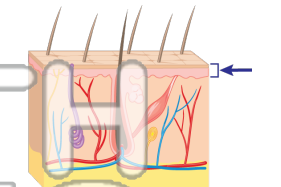
4. _____ tissue, ne



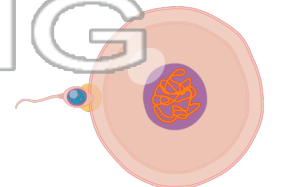
5. _____ or nine w
zygote

PREVIEW
Please [Sign In](#) or [Sign Up](#) to download the printable version of this worksheet

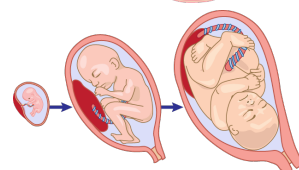
6. _____ - the outermost layer of the skin made up of tightly bound cells that create a water-tight physical barrier to the outside world



7. _____ - the point at which a single sperm cell enters an egg cell within the female reproductive tract and the genetic material is combined



8. _____ - a developing human from the 9th week to the time of birth; defined by growth of the body and organ systems





Name _____ Class _____ Date _____

Match each of the following terms to its definition:

Fertilization

Dermis

Allergic reaction

Antibody

Antigen

Embryo

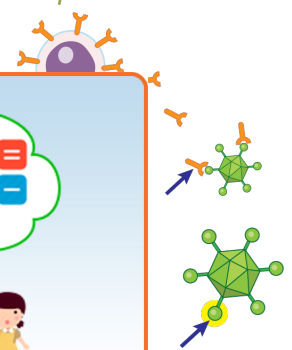
Epidermis

Fetus

1. **allergic reaction** - an overreaction by the body's immune system when a person is exposed to certain materials such as dust, pollen, latex, or certain foods



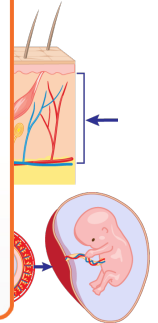
2. **antibody** - a protein produced by B lymphocytes that attaches to an antigen and leads to its removal



3. **antigen** - a substance that causes the body to produce antibodies



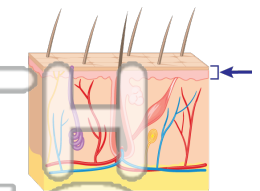
4. **dermis** - the middle layer of the skin, containing nerves, blood vessels, and hair follicles



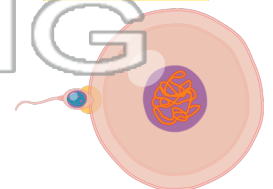
5. **embryo** - a developing human from the second week to the ninth week of pregnancy

PREVIEW
Please [Sign In](#) or [Sign Up](#) to download the printable version of this worksheet

6. **epidermis** - the outermost layer of the skin made up of tightly bound cells that create a water-tight physical barrier to the outside world



7. **fertilization** - the point at which a single sperm cell enters an egg cell within the female reproductive tract and the genetic material is combined



8. **fetus** - a developing human from the 9th week to the time of birth; defined by growth of the body and organ systems

