



Name \_\_\_\_\_ Class \_\_\_\_\_ Date \_\_\_\_\_

### Match each of the following terms to its definition:

Capillaries

Bile

ATP

Amino acids

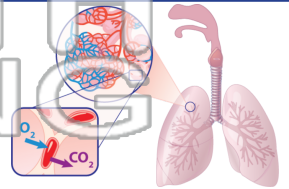
Complex carbohydrates

Alveoli

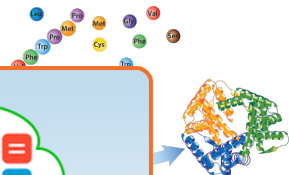
Bronchi

Emphysema

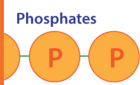
1. \_\_\_\_\_ - tiny air spaces within the lungs where gases (oxygen and carbon dioxide) are exchanged between the air space and blood capillaries that surround these spaces



2. \_\_\_\_\_ - the simplest form of protein that can be absorbed across the intestinal walls



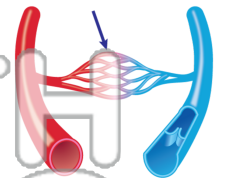
3. \_\_\_\_\_ cellular e



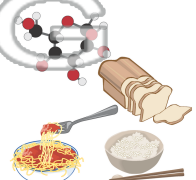
4. \_\_\_\_\_ bladder l

5. \_\_\_\_\_ and out c

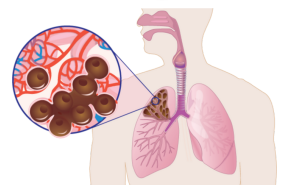
6. \_\_\_\_\_ - the smallest blood vessels found in very rich networks between arteries and veins



7. \_\_\_\_\_ - very large, energy-rich molecules made up of many smaller units of carbohydrate and found in many plant foods such as rice and grains



8. \_\_\_\_\_ - a disease of the lungs very common in smokers, where the air spaces enlarge to where they no longer function



**PREVIEW**

Please [Sign In](#) or [Sign Up](#) to download the printable version of this worksheet



Name \_\_\_\_\_ Class \_\_\_\_\_ Date \_\_\_\_\_

**Match each of the following terms to its definition:**

Capillaries

Bile

ATP

Amino acids

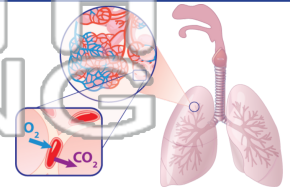
Complex carbohydrates

Alveoli

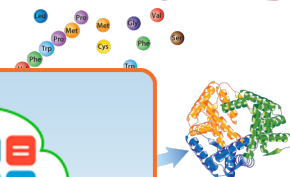
Bronchi

Emphysema

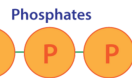
1. **alveoli** - tiny air spaces within the lungs where gases (oxygen and carbon dioxide) are exchanged between the air space and blood capillaries that surround these spaces



2. **amino acids** - the simplest form of protein that can be absorbed across the intestinal walls



3. **ATP** - energy



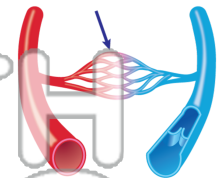
4. **bile** - before be



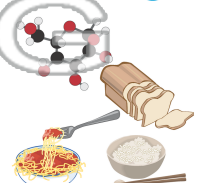
5. **bronchi** - out of the

**PREVIEW**  
Please [Sign In](#) or [Sign Up](#) to download the printable version of this worksheet

6. **capillaries** - the smallest blood vessels found in very rich networks between arteries and veins



7. **complex carbohydrates** - very large, energy-rich molecules made up of many smaller units of carbohydrate and found in many plant foods such as rice and grains



8. **emphysema** - a disease of the lungs very common in smokers, where the air spaces enlarge to where they no longer function

