



Name _____ Class _____ Date _____

Match each of the following terms to its definition:

Algae

Autotroph

Angiosperm

Fungi

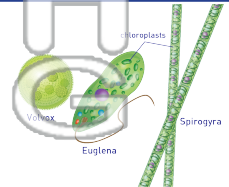
Animals

Eubacteria

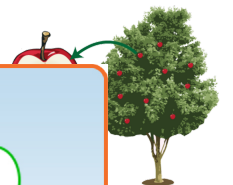
Classification

Archaeobacteria

1. _____ - plant-like protists that contain chloroplasts and are autotrophic



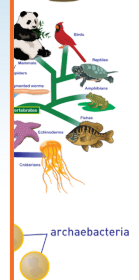
2. _____ - a plant that produces seeds that are within a fruit



3. _____ organism

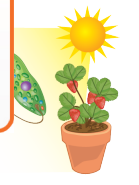


4. _____ eukaryot

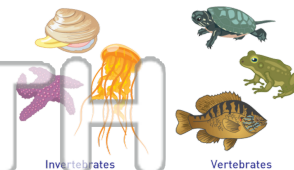


5. _____ sun

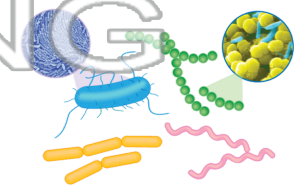
Please [Sign In](#) or [Sign Up](#) to download the printable version of this worksheet



6. _____ - the process of grouping items together according to their similarities



7. _____ - group of bacteria found in diverse environments throughout the earth



8. _____ - the kingdom that contains eukaryotic heterotrophs that absorb nutrients





Name _____ Class _____ Date _____

Match each of the following terms to its definition:

Algae

Autotroph

Angiosperm

Fungi

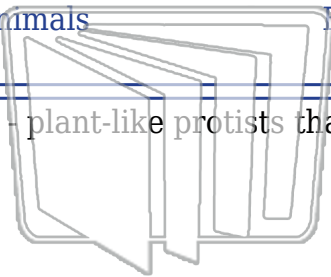
Animals

Eubacteria

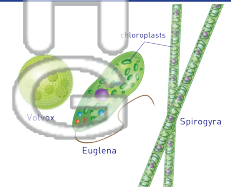
Classification

Archaeobacteria

1. **algae** - plant-like protists that contain chloroplasts and are autotrophic



NEW PATH
LEARNING



2. **angiosperm** - a plant that produces seeds that are within a fruit

3. **animal**
organism



4. **archaea**
eukaryote

5. **autotroph**
sun

PREVIEW
Please [Sign In](#) or [Sign Up](#) to download
the printable version of this worksheet

6. **classification** - the process of grouping items together according to their similarities

7. **eubacteria** - group of bacteria found in diverse environments throughout the earth

8. **fungi** - the kingdom that contains eukaryotic heterotrophs that absorb nutrients

