



Name \_\_\_\_\_ Class \_\_\_\_\_ Date \_\_\_\_\_

**Match each of the following terms to its definition:**

Fungi

Hyphae

Eubacteria

Gymnosperm

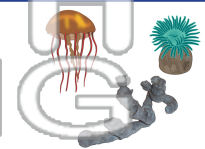
Heterotroph

Collar cells

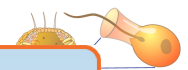
Invertebrate

Cnidarians

1. \_\_\_\_\_ - radially symmetrical invertebrates that live in the ocean and have tentacles around their mouths and stinging cells (for example - jellyfish)



2. \_\_\_\_\_ - cells that line the central cavity of a sponge that trap and digest food particles



3. \_\_\_\_\_ bacteria; that do not obtain food



4. \_\_\_\_\_ organism that obtains its food from other organisms

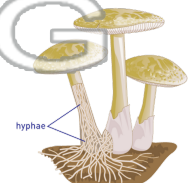
5. \_\_\_\_\_ protective covering

**PREVIEW**  
Please [Sign In](#) or [Sign Up](#) to download the printable version of this worksheet

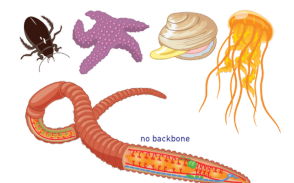
6. \_\_\_\_\_ - a living organism that is not capable of producing its own food; also known as a consumer



7. \_\_\_\_\_ - threadlike filaments of branching cells that make up the bodies of multicellular fungi



8. \_\_\_\_\_ - animal that does not have a backbone; some of the major groups of invertebrates are cnidarians, arthropods, worms and mollusks





Name \_\_\_\_\_ Class \_\_\_\_\_ Date \_\_\_\_\_

**Match each of the following terms to its definition:**

Fungi

Hyphae

Eubacteria

Gymnosperm

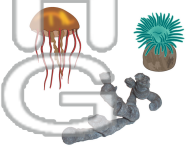
Heterotroph

Collar cells

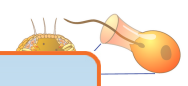
Invertebrate

Cnidarians

**1. cnidarians** - radially symmetrical invertebrates that live in the ocean and have tentacles around their mouths and stinging cells (for example jellyfish)



**2. collar cells** - cells that line the central cavity of a sponge that trap and digest food particles



**3. eubacteria** - bacteria; that do not obtain food



**4. fungi** that are sources of



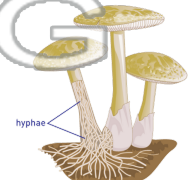
**5. gymnosperm** - protective



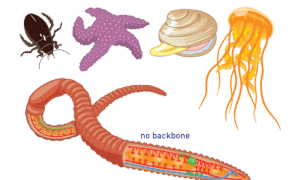
**6. heterotroph** - a living organism that is not capable of producing its own food; also known as a consumer



**7. hyphae** - threadlike filaments of branching cells that make up the bodies of multicellular fungi



**8. invertebrate** - animal that does not have a backbone; some of the major groups of invertebrates are cnidarians, arthropods, worms and mollusks



**PREVIEW**

Please [Sign In](#) or [Sign Up](#) to download the printable version of this worksheet