



Name \_\_\_\_\_ Class \_\_\_\_\_ Date \_\_\_\_\_

### Match each of the following terms to its definition:

Nebula

Neil Armstrong

Meteoroid

Radiative zone

Photosphere

Prolemaic theory

Satellite

Orbital velocity

1. \_\_\_\_\_ - a small rocky body that orbits the Sun, originating from an asteroid



2. \_\_\_\_\_ - a dusty gas cloud in interstellar space in which stars can form; composed of dust, helium and hydrogen



3. \_\_\_\_\_

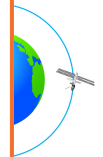


4. \_\_\_\_\_ the Earth

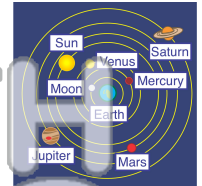


5. \_\_\_\_\_

**PREVIEW**  
Please [Sign In](#) or [Sign Up](#) to download the printable version of this worksheet



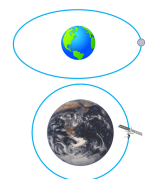
6. \_\_\_\_\_ - the theory that the Earth is the center of the universe and the sun and all planets revolve around it



7. \_\_\_\_\_ - the inner layer of the Sun between the Sun's core and the convection zone



8. \_\_\_\_\_ - a natural or human-made object that orbits another, usually a planet





Name \_\_\_\_\_ Class \_\_\_\_\_ Date \_\_\_\_\_

## Match each of the following terms to its definition:

Nebula

Neil Armstrong

Meteoroid

Radiative zone

Photosphere

Ptolemaic theory

Satellite

Orbital velocity

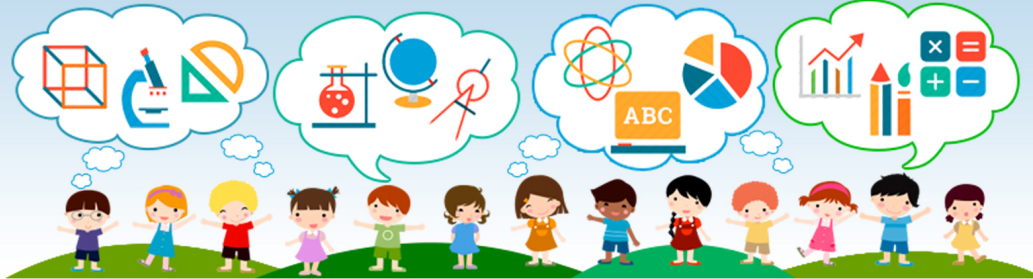
1. **meteoroid** - a small rocky body that orbits the Sun, originating from an asteroid



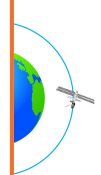
2. **nebula** - a dusty gas cloud in interstellar space in which stars can form; composed of dust, helium and hydrogen



3. **Neil A**



4. **orbita**  
orbit the

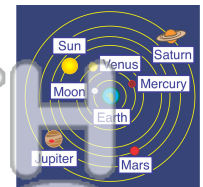


5. **photo**

**PREVIEW**  
Please [Sign In](#) or [Sign Up](#) to download the printable version of this worksheet



6. **Ptolemaic theory** - the theory that the Earth is the center of the universe and the sun and all planets revolve around it



7. **radiative zone** - the inner layer of the Sun between the Sun's core and the convection zone



8. **satellite** - a natural or human-made object that orbits another, usually a planet

