



Name _____ Class _____ Date _____

Match each of the following terms to its definition:

Tide

Saltation

Sea stack

Sediment

Ventifact

Sea arch

Soil profile

Topographic map

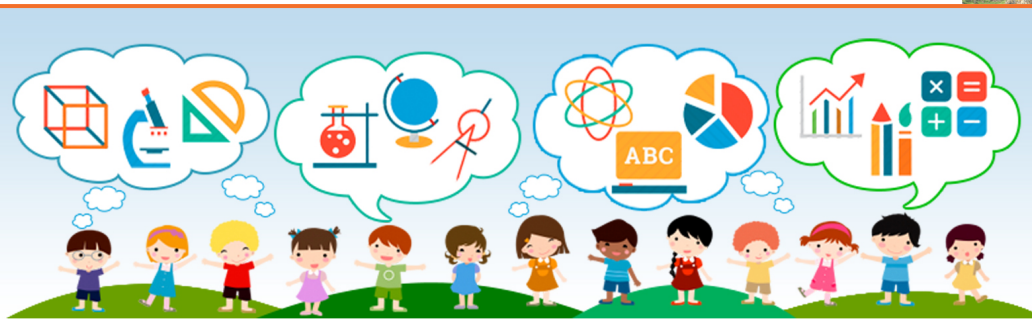
1. _____ - the bouncing of sand particles into each other caused by the wind; this causes the sand to move forward in the direction of the blowing wind



2. _____ - an arch created by waves eroding bedrock on a shoreline



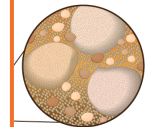
3. _____
water



4. _____

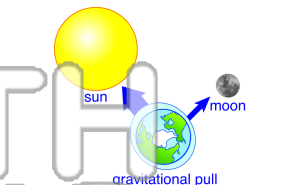
PREVIEW
Please [Sign In](#) or [Sign Up](#) to download the printable version of this worksheet

5. _____
uppermo

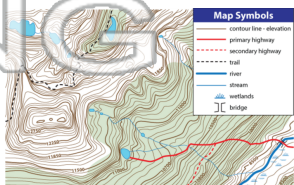


Soil profile	
horizon	topsoil with humus
horizon	subsoil
horizon	weathered rock
bedrock	unaltered rock

6. _____ - the rising and falling of the ocean depths near the shore due to the gravitational pull of the Moon and the Sun on the oceans; periodic rising and falling of the surface of the ocean along a shoreline



7. _____ - a map that shows many features (such as water, roads and landmarks) but also uses contour lines to precisely represent the size, shape and elevation of the features of the land



8. _____ - a ventifact is a large piece of rock that has been abraded by wind-blown particles like sand, resulting in polished, but angular features





Name _____ Class _____ Date _____

Match each of the following terms to its definition:

Tide

Saltation

Sea stack

Sediment

Ventifact

Sea arch

Soil profile

Topographic map

1. **saltation** - the bouncing of sand particles into each other caused by the wind; this causes the sand to move forward in the direction of the blowing wind



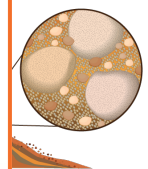
2. **sea arch** - an arch created by waves eroding bedrock on a shoreline



3. **sea stack** - a piece of rock in the sea that has been eroded from a headland



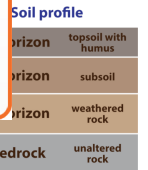
4. **sediment** - particles of rock and soil that have been eroded from a land surface and are being transported by wind, water, or ice



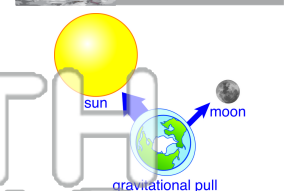
5. **soil profile** - a vertical section of soil from the surface to the bedrock

PREVIEW

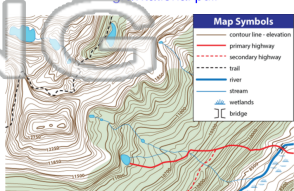
Please [Sign In](#) or [Sign Up](#) to download the printable version of this worksheet



6. **tide** - the rising and falling of the ocean depths near the shore due to the gravitational pull of the Moon and the Sun on the oceans; periodic rising and falling of the surface of the ocean along a shoreline



7. **topographic map** - a map that shows many features (such as water, roads and landmarks) but also uses contour lines to precisely represent the size, shape and elevation of the features of the land



8. **ventifact** - a ventifact is a large piece of rock that has been abraded by wind-blown particles like sand, resulting in polished, but angular features

