



Name _____ Class _____ Date _____

Match each of the following terms to its definition:

Algae

Angiosperm

Binary fission

Archaeobacteria

Bacteriophage

Autotroph

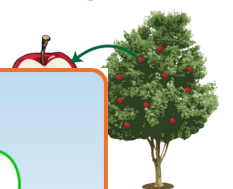
Animal

Asexual reproduction

1. _____ - a large and diverse group of simple, plant-like protists ranging from unicellular to multicellular organisms; plant-like protists that contain chloroplasts and are autotrophic



2. _____ - a plant that produces flowers and develops fruit around its seeds



3. _____ organism



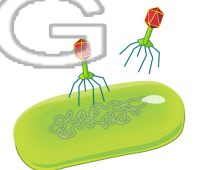
4. _____ classification nucleus, sources;

5. _____ to produce

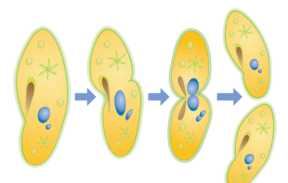
6. _____ - a living organism, such as algae, that is capable of producing its own food; also called a producer



7. _____ - a small virus that invades bacterial cells, meaning



8. _____ - a form of asexual reproduction in which a parent cell splits into two identical daughter cells after the DNA is separated





Name _____ Class _____ Date _____

Match each of the following terms to its definition:

Algae

Angiosperm

Binary fission

Archaeobacteria

Bacteriophage

Autotroph

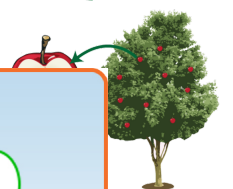
Animal

Asexual reproduction

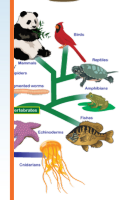
1. algae - a large and diverse group of simple, plant-like protists ranging from unicellular to multicellular organisms; plant-like protists that contain chloroplasts and are autotrophic



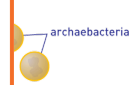
2. angiosperm - a plant that produces flowers and develops fruit around its seeds



3. animal - capable of movement



4. archaeobacteria - classification based on the presence of a nucleus, and the source of energy



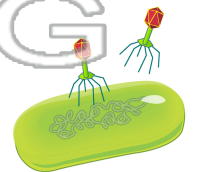
5. asexual reproduction - is involved in the production of offspring

PREVIEW
Please [Sign In](#) or [Sign Up](#) to download the printable version of this worksheet

6. autotroph - a living organism, such as algae, that is capable of producing its own food; also called a producer



7. bacteriophage - a small virus that invades bacterial cells, meaning it is a virus that infects bacteria



8. binary fission - a form of asexual reproduction in which a parent cell splits into two identical daughter cells after the DNA is separated

