



Name _____ Class _____ Date _____

Match each of the following terms to its definition:

Phloem

Infectious disease

Protista

Kingdom

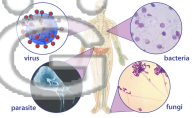
Invertebrate

Protozoa

Plant life cycle

Mycelium

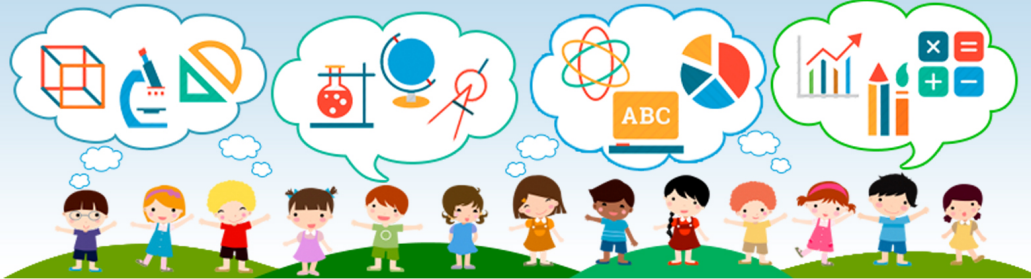
1. _____ - an illness that can be passed from one organism to another, either directly or indirectly



2. _____ - animal that does not have a backbone; some of the major groups of invertebrates are cnidarians, arthropods, worms and mollusks



3. _____ and the t kingdom

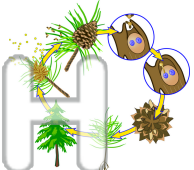


4. _____

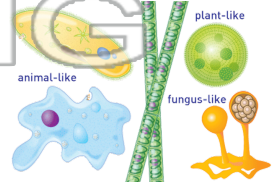
5. _____ parts of t

PREVIEW
Please [Sign In](#) or [Sign Up](#) to download the printable version of this worksheet

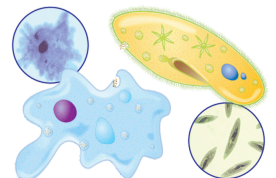
6. _____ - how long a plant takes to grow, flower, and make seeds



7. _____ - a kingdom of scientific classification which includes organisms that are mostly unicellular, their cells have a nucleus, some make their own food while others need to get their food from other sources (for example - amoebas); single-celled or many-celled



8. _____ - single-celled, animal-like protist that has the ability to move





Name _____ Class _____ Date _____

Match each of the following terms to its definition:

Phloem

Infectious disease

Protista

Kingdom

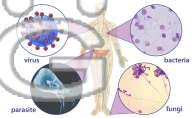
Invertebrate

Protozoa

Plant life cycle

Mycelium

1. infectious disease - an illness that can be passed from one organism to another, either directly or indirectly



2. invertebrate - animal that does not have a backbone; some of the major groups of invertebrates are cnidarians, arthropods, worms and mollusks



3. kingdom - the taxonomic rank of a group of animals, plants, fungi, or bacteria

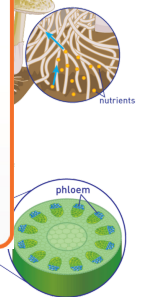


4. mycelium - the vegetative part of a fungus consisting of a mass of branching, thread-like hyphae



5. phloem - the living tissue that transports the soluble organic compounds made during photosynthesis throughout the plant

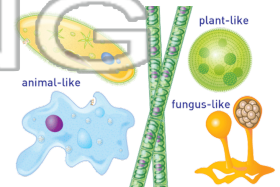
PREVIEW
Please [Sign In](#) or [Sign Up](#) to download the printable version of this worksheet



6. plant life cycle - how long a plant takes to grow, flower, and make seeds



7. protista - a kingdom of scientific classification which includes organisms that are mostly unicellular, their cells have a nucleus, some make their own food while others need to get their food from other sources (for example - amoebas); single-celled or many-celled



8. protozoa - single-celled, animal-like protist that has the ability to move

