



Name _____ Class _____ Date _____

Match each of the following terms to its definition:

Xylem

Taxonomy

Scientific name

Vertebrates

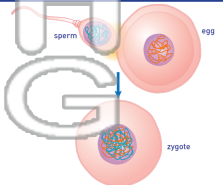
Virus

Antibiotic

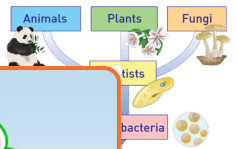
Sexual reproduction

Vaccine

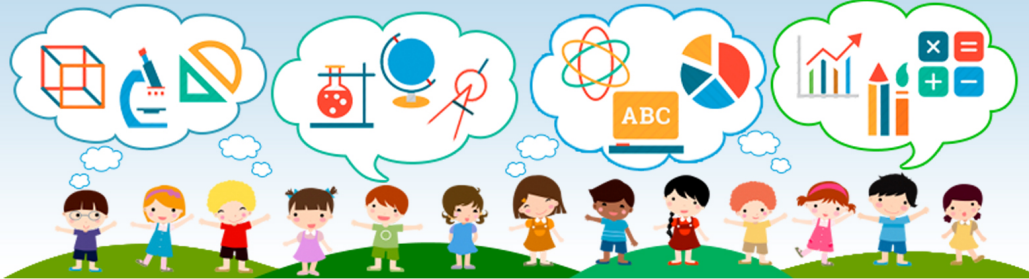
1. _____ - a type of reproduction in which the genetic information from two sex cells combines to form a zygote



2. _____ - the classification of all known living organisms that shows relationships between different organisms



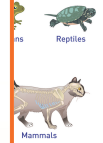
3. _____ will destroy infection



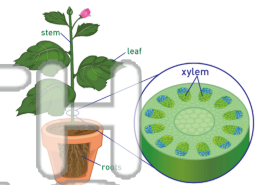
4. _____ vertebrates



5. _____ reproduction



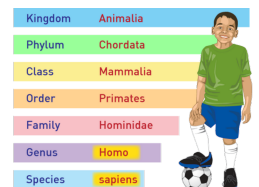
6. _____ - vascular tissue that moves water and minerals from the roots to the rest of the plant



7. _____ - a compound that kills bacterial cells without damaging an organism's own cells



8. _____ - a two-part name that is made up of an organism's genus and species





Name _____ Class _____ Date _____

Match each of the following terms to its definition:

Xylem

Taxonomy

Scientific name

Vertebrates

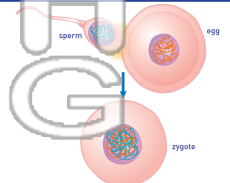
Virus

Antibiotic

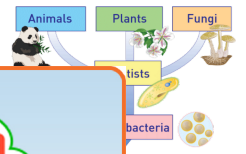
Sexual reproduction

Vaccine

1. **sexual reproduction** - a type of reproduction in which the genetic information from two sex cells combines to form a zygote



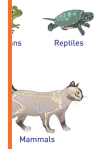
2. **taxonomy** - the classification of all known living organisms that shows relationships between different organisms



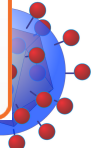
3. **vaccine** - destroys viruses



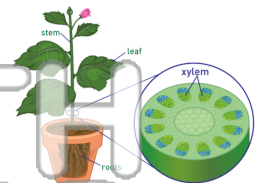
4. **vertebrate** - an animal with a backbone



5. **virus** - a microscopic infectious agent that can only reproduce inside a living cell



6. **xylem** - vascular tissue that moves water and minerals from the roots to the rest of the plant



7. **antibiotic** - a compound that kills bacterial cells without damaging an organism's own cells



8. **scientific name** - a two-part name that is made up of an organism's genus and species

Kingdom	Animalia
Phylum	Chordata
Class	Mammalia
Order	Primates
Family	Hominidae
Genus	Homo
Species	sapiens



PREVIEW

Please [Sign In](#) or [Sign Up](#) to download the printable version of this worksheet