



Name _____ Class _____ Date _____

Match each of the following terms to its definition:

Chloroplast

Cell wall

Cell

Cytoplasm

Cell membrane

Compound microscope

Cellular respiration

Compound

1. _____ - the basic building block of all living organisms

2. _____ - the layer inside the cell wall of plants that regulates which substances enter and leave the cell; the outer protective layer of all animal cells

3. _____ organism

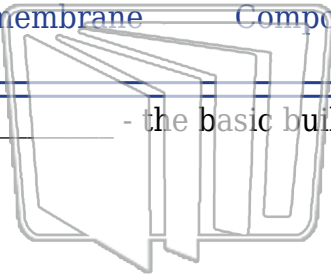
4. _____ food mol
food into

5. _____ chloroph
the form

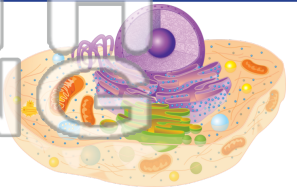
6. _____ - a molecule made up of two or more different elements that are chemically combined

7. _____ - a microscope that contains more than one lens

8. _____ - a jelly-like substance found inside a cell surrounding its organelles; supports and protects the organelles of the cell

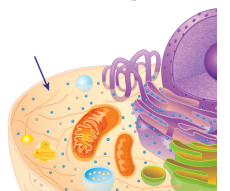
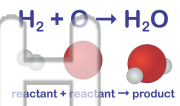
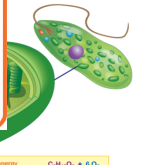
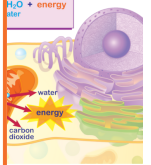
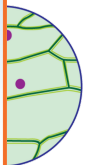
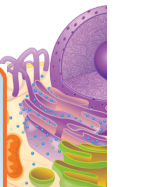


NEW PATH
LEARNING



PREVIEW

Please [Sign In](#) or [Sign Up](#) to download the printable version of this worksheet





Name _____ Class _____ Date _____

Match each of the following terms to its definition:

Chloroplast

Cell wall

Cell

Cytoplasm

Cell membrane

Compound microscope

Cellular respiration

Compound

1. **cell** - the basic building block of all living organisms

2. **cell membrane** - the layer inside the cell wall of plants that regulates which substances enter and leave the cell; the outer protective layer of all animal cells

3. **cell wall** - the rigid outer layer of a plant cell that provides structural support and protection

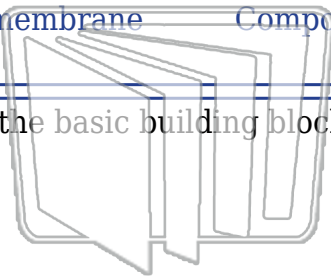
4. **cellular respiration** - the process by which cells break down food molecules to produce energy

5. **chloroplast** - an organelle found in plant cells that captures light energy and converts it into chemical energy through photosynthesis

6. **compound** - a molecule made up of two or more different elements that are chemically combined

7. **compound microscope** - a microscope that contains more than one lens

8. **cytoplasm** - a jelly-like substance found inside a cell surrounding its organelles; supports and protects the organelles of the cell



NEW PATH
LEARNING



PREVIEW

Please [Sign In](#) or [Sign Up](#) to download the printable version of this worksheet

