



Name \_\_\_\_\_ Class \_\_\_\_\_ Date \_\_\_\_\_

### Match each of the following terms to its definition:

Nucleic acid

Organ

Organ system

Nuclear pores

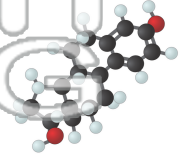
Organelle

Nucleolus

Nuclear envelope

Molecule

1. \_\_\_\_\_ - the smallest unit of an element formed when two or more atoms join together chemically; the chemical combination of at least two atoms



2. \_\_\_\_\_ - a membrane which surrounds and protects the nucleus

3. \_\_\_\_\_ nucleus

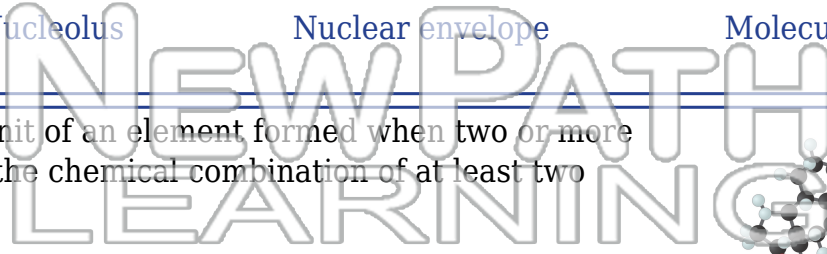
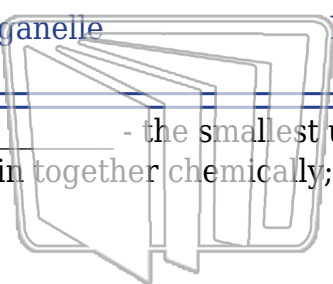
4. \_\_\_\_\_ instructive hydrogen

5. \_\_\_\_\_ ribosome

6. \_\_\_\_\_ - a structure made up of different types of tissues that work together to perform a certain function

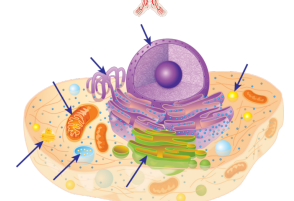
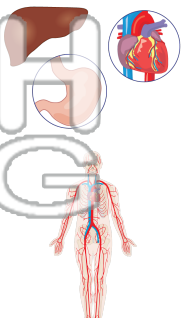
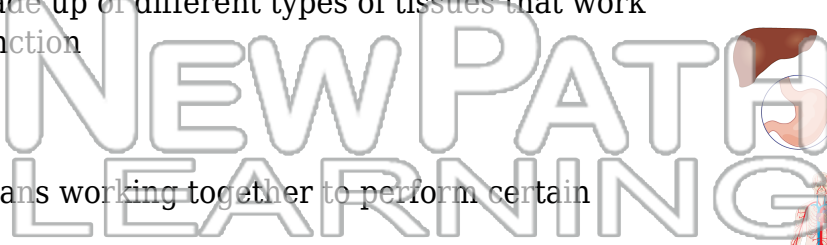
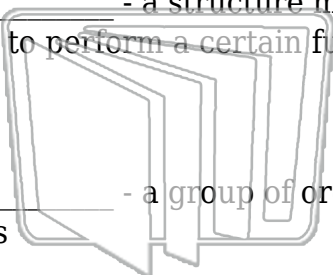
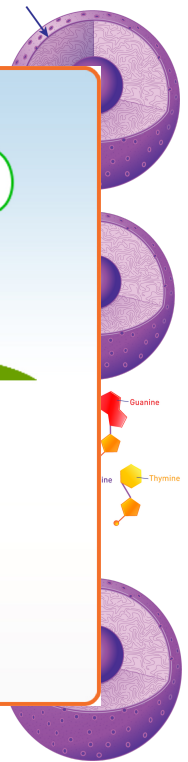
7. \_\_\_\_\_ - a group of organs working together to perform certain functions

8. \_\_\_\_\_ - a structure within a cell that carries out specific functions; nucleus and mitochondrion are examples



**PREVIEW**

Please [Sign In](#) or [Sign Up](#) to download the printable version of this worksheet





Name \_\_\_\_\_ Class \_\_\_\_\_ Date \_\_\_\_\_

**Match each of the following terms to its definition:**

Nucleic acid

Organ

Organ system

Nuclear pores

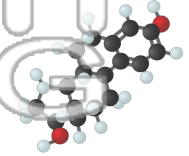
Organelle

Nucleolus

Nuclear envelope

Molecule

1. **molecule** - the smallest unit of an element formed when two or more atoms join together chemically; the chemical combination of at least two atoms



2. **nuclear envelope** - a membrane which surrounds and protects the nucleus

3. **nucleolus** - a small, dense region within the nucleus, surrounded by a nuclear envelope

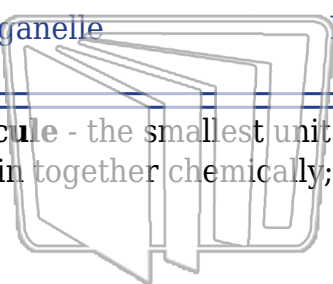
4. **nucleic acid** - a long chain of nucleotides that carries genetic information

5. **nucleolus** - a small, dense region within the nucleus, surrounded by a nuclear envelope

6. **organ** - a structure made up of different types of tissues that work together to perform a certain function

7. **organ system** - a group of organs working together to perform certain functions

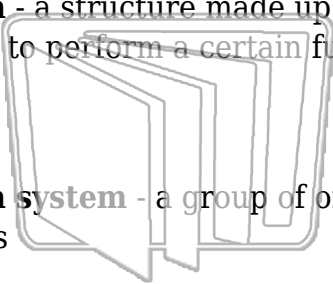
8. **organelle** - a structure within a cell that carries out specific functions; nucleus and mitochondrion are examples



NEW PATH  
LEARNING

**PREVIEW**

Please [Sign In](#) or [Sign Up](#) to download the printable version of this worksheet



NEW PATH  
LEARNING

