



Name _____ Class _____ Date _____

Match each of the following terms to its definition:

Metaphase

Microscope

Genetic code

Golgi body

Karyotype

Lysosome

Interphase

Meiosis

1. _____ - the correspondence between RNA triplets and specific amino acids that are used to form a particular protein

	C	A	G
U	Phenylalanine	Alanine	Valine
C	Leucine	Proline	Alanine
A	Asparagine	Aspartic acid	Glutamic acid
G	Glycine	Glutamic acid	Glutamic acid

2. _____ - an organelle that directs different materials made in the cell where they need to go

3. _____ division of chromosomes



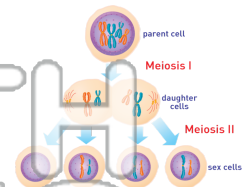
4. _____ arranged

5. _____ break do

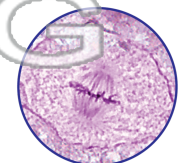
PREVIEW

Please [Sign In](#) or [Sign Up](#) to download the printable version of this worksheet

6. _____ - cellular process responsible for producing sex cells (egg and sperm) that contain half the number of chromosomes of the parent cell



7. _____ - a phase of mitosis following prophase during which the double-stranded chromosomes line up along the center of the cell and the spindle fibers attach to each centromere



8. _____ - a tool used by scientists to make small things appear larger so that they are easier to observe and study; an instrument that magnifies small objects





Name _____ Class _____ Date _____

Match each of the following terms to its definition:

Metaphase

Microscope

Genetic code

Golgi body

Karyotype

Lysosome

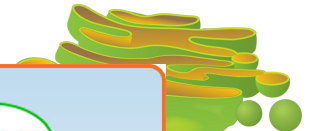
Interphase

Meiosis

1. **genetic code** - the correspondence between RNA triplets and specific amino acids that are used to form a particular protein

	C	A	G
U	Phenylalanine	Leucine	Cysteine
C	Proline	Glutamine	Alanine
A	Asparagine	Aspartic acid	Glutamic acid
G	Glycine	Valine	Proline

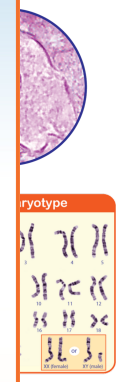
2. **Golgi body** - an organelle that directs different materials made in the cell where they need to go



3. **interphase** - division of chromosomes



4. **karyotype** - chromosomes arranged

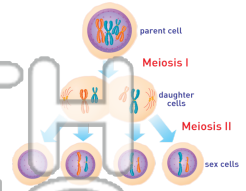


5. **lysosome** - down food

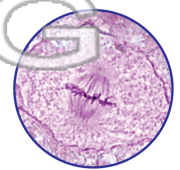
PREVIEW

Please [Sign In](#) or [Sign Up](#) to download the printable version of this worksheet

6. **meiosis** - cellular process responsible for producing sex cells (egg and sperm) that contain half the number of chromosomes of the parent cell



7. **metaphase** - a phase of mitosis following prophase during which the double-stranded chromosomes line up along the center of the cell and the spindle fibers attach to each centromere



8. **microscope** - a tool used by scientists to make small things appear larger so that they are easier to observe and study; an instrument that magnifies small objects

