



Name \_\_\_\_\_ Class \_\_\_\_\_ Date \_\_\_\_\_

**Match each of the following terms to its definition:**

Convergent boundary

Force

Compression

Continental drift

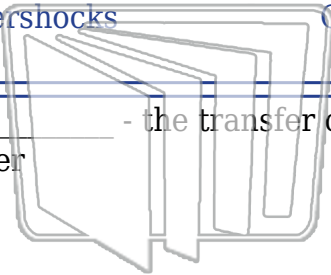
Aftershocks

Convection

Conduction

Anticline

1. \_\_\_\_\_ - the transfer of heat energy from the contact of one object to another



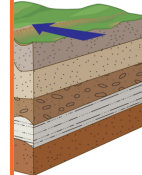
2. \_\_\_\_\_ - a push or pull upon an object that causes it to change speed or direction



3. \_\_\_\_\_ occur near

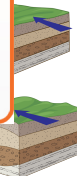


4. \_\_\_\_\_

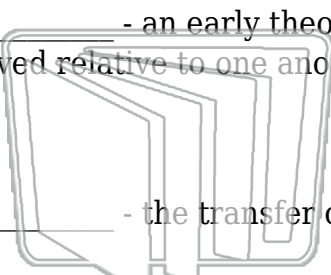


5. \_\_\_\_\_ against e

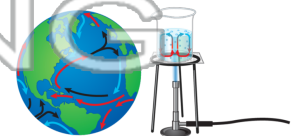
**PREVIEW**  
Please [Sign In](#) or [Sign Up](#) to download the printable version of this worksheet



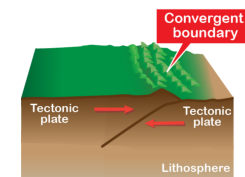
6. \_\_\_\_\_ - an early theory that the continents float on the mantle and have moved relative to one another over geologic time



7. \_\_\_\_\_ - the transfer of heat energy from the movement of currents



8. \_\_\_\_\_ - a boundary where two tectonic plates move toward each other





Name \_\_\_\_\_ Class \_\_\_\_\_ Date \_\_\_\_\_

**Match each of the following terms to its definition:**

Convergent boundary

Force

Compression

Continental drift

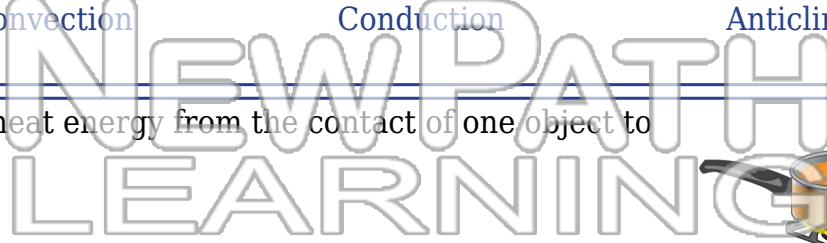
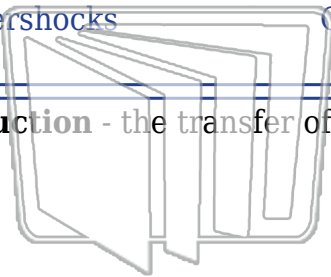
Aftershocks

Convection

Conduction

Anticline

**1. conduction** - the transfer of heat energy from the contact of one object to another



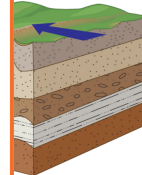
**2. force** - a push or pull upon an object that causes it to change speed or direction



**3. aftershocks** occur near

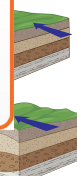


**4. anticline**

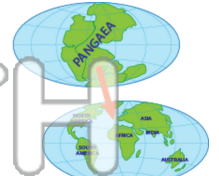
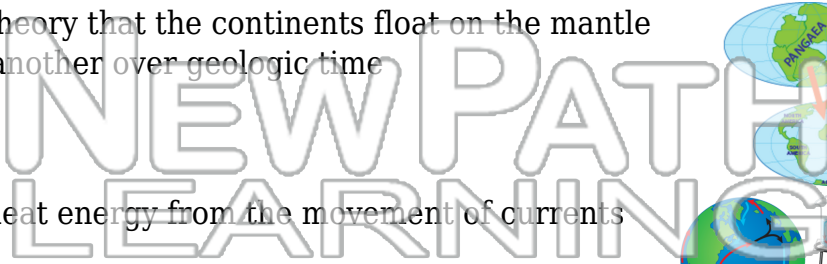
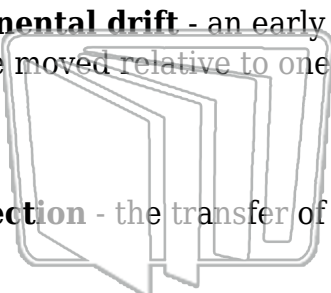


**5. compression** against e

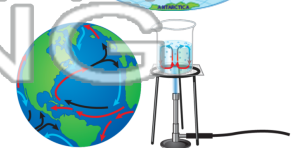
**PREVIEW**  
Please [Sign In](#) or [Sign Up](#) to download the printable version of this worksheet



**6. continental drift** - an early theory that the continents float on the mantle and have moved relative to one another over geologic time



**7. convection** - the transfer of heat energy from the movement of currents



**8. convergent boundary** - a boundary where two tectonic plates move toward each other

