



Name _____ Class _____ Date _____

Match each of the following terms to its definition:

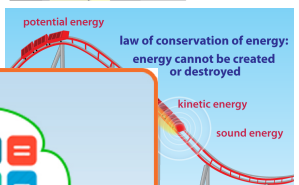
Electrical energy Electromagnetic energy Convection Conservation of energy

Fossil fuel Energy transformation Energy Conduction

1. _____ - the transfer of heat energy when one object is in contact with another object



2. _____ - a law that states that energy cannot be created or destroyed



3. _____ within a

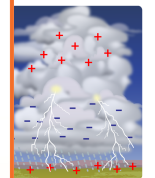


4. _____ charged



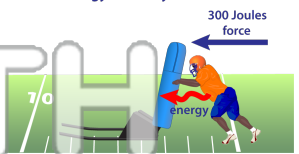
5. _____

PREVIEW
Please [Sign In](#) or [Sign Up](#) to download the printable version of this worksheet



6. _____ - the ability to do work

energy = ability to do work



7. _____ - the conversion of one form of energy to another form of energy



8. _____ - a type of fuel found within the Earth that was formed from the decomposition of ancient organisms; includes oil, natural gas and coal





Name _____ Class _____ Date _____

Match each of the following terms to its definition:

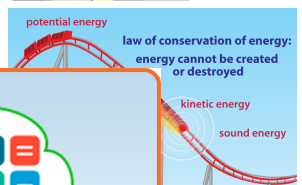
Electrical energy Electromagnetic energy Convection Conservation of energy

Fossil fuel Energy transformation Energy Conduction

1. conduction - the transfer of heat energy when one object is in contact with another object



2. conservation of energy - a law that states that energy cannot be created or destroyed



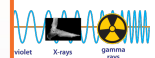
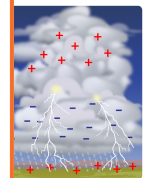
3. convection within a



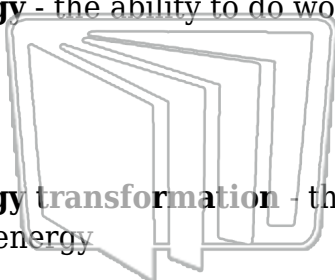
4. electrical energy of charge

5. electromagnetic energy

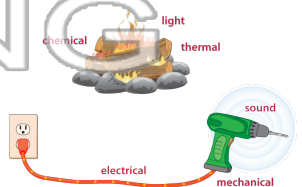
PREVIEW
Please [Sign In](#) or [Sign Up](#) to download the printable version of this worksheet



6. energy - the ability to do work



7. energy transformation - the conversion of one form of energy to another form of energy



8. fossil fuel - a type of fuel found within the Earth that was formed from the decomposition of ancient organisms; includes oil, natural gas and coal

