



Name \_\_\_\_\_ Class \_\_\_\_\_ Date \_\_\_\_\_

## Match each of the following terms to its definition:

Embryo

Guard cells

Germination

Fertilization

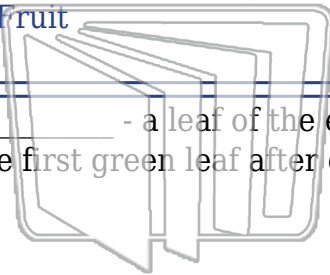
Fruit

Glucose

Cotyledon

Dicot

1. \_\_\_\_\_ - a leaf of the embryo of a seed plant; in some species it forms the first green leaf after germination



NEW PATH  
LEARNING



2. \_\_\_\_\_ - plants (angiosperms) that have two cotyledons (seed leaves), veins that branch out, and a taproot system



3. \_\_\_\_\_ human development following

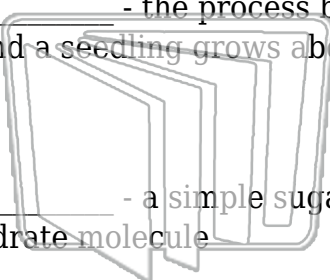


4. \_\_\_\_\_ develops combination

## PREVIEW

Please [Sign In](#) or [Sign Up](#) to download the printable version of this worksheet

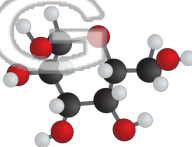
6. \_\_\_\_\_ - the process by which the plant embryo inside a seed grows and a seedling grows above soil; an early growth stage of an embryo



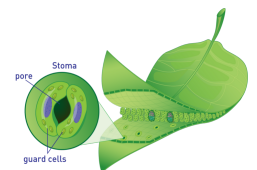
NEW PATH  
LEARNING



7. \_\_\_\_\_ - a simple sugar; often broken down from a more complex carbohydrate molecule



8. \_\_\_\_\_ - a pair of cells found in a stoma that control the size of the pore opening; help control the amount of gases moving in and out of a leaf





Name \_\_\_\_\_ Class \_\_\_\_\_ Date \_\_\_\_\_

## Match each of the following terms to its definition:

Embryo

Guard cells

Germination

Fertilization

Fruit

Glucose

Cotyledon

Dicot

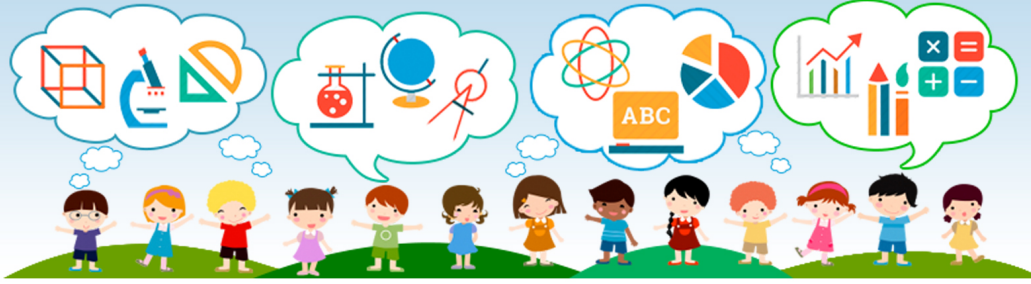
1. **cotyledon** - a leaf of the embryo of a seed plant; in some species it forms the first green leaf after germination



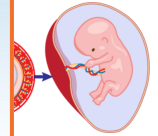
2. **dicot** - plants (angiosperms) that have two cotyledons (seed leaves), veins that branch out, and a taproot system



3. **embryo** - develops from fertilization

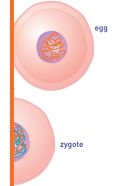


4. **fertilization** - develops from combination



5. **fruit** -

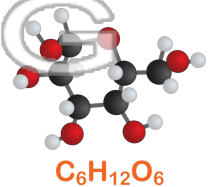
**PREVIEW**  
Please [Sign In](#) or [Sign Up](#) to download the printable version of this worksheet



6. **germination** - the process by which the plant embryo inside a seed grows and a seedling grows above soil; an early growth stage of an embryo



7. **glucose** - a simple sugar; often broken down from a more complex carbohydrate molecule



8. **guard cells** - a pair of cells found in a stoma that control the size of the pore opening; help control the amount of gases moving in and out of a leaf

