



Name \_\_\_\_\_ Class \_\_\_\_\_ Date \_\_\_\_\_

### Match each of the following terms to its definition:

Soil conservation

Sediment

Soil profile

Sea stack

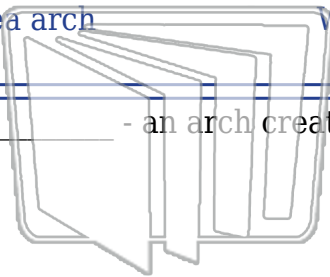
Sea arch

Weathering

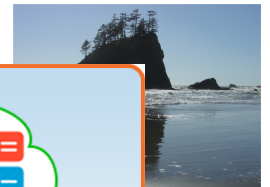
Transported soil

Topographic map

1. \_\_\_\_\_ - an arch created by waves eroding bedrock on a shoreline



2. \_\_\_\_\_ - an isolated stack of eroded bedrock surrounded by ocean water



3. \_\_\_\_\_

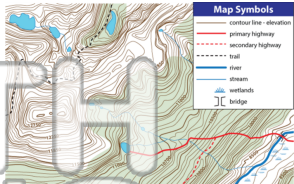


4. \_\_\_\_\_ its long-t

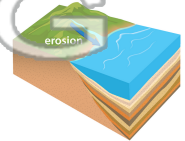
5. \_\_\_\_\_ uppermo

**PREVIEW**  
Please [Sign In](#) or [Sign Up](#) to download the printable version of this worksheet

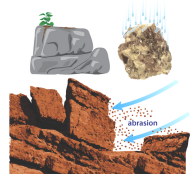
6. \_\_\_\_\_ - a map that shows many features (such as water, roads and landmarks) but also uses contour lines to precisely represent the size, shape and elevation of the features of the land



7. \_\_\_\_\_ - soil that has been moved or transported and deposited at a distance from its parent rock



8. \_\_\_\_\_ - the natural processes that break large rock into smaller and smaller pieces





Name \_\_\_\_\_ Class \_\_\_\_\_ Date \_\_\_\_\_

**Match each of the following terms to its definition:**

Soil conservation

Sediment

Soil profile

Sea stack

Sea arch

Weathering

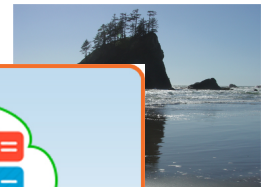
Transported soil

Topographic map

1. **sea arch** - an arch created by waves eroding bedrock on a shoreline



2. **sea stack** - an isolated stack of eroded bedrock surrounded by ocean water



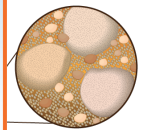
3. **sediment**



4. **soil conservation** - ensure it

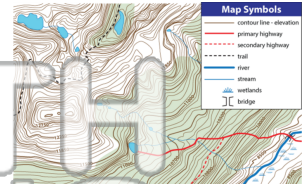
5. **soil profile** - uppermost

**PREVIEW**  
Please [Sign In](#) or [Sign Up](#) to download the printable version of this worksheet

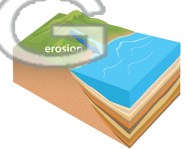


Soil profile	
horizon	topsoil with humus
horizon	subsoil
horizon	weathered rock
bedrock	unaltered rock

6. **topographic map** - a map that shows many features (such as water, roads and landmarks) but also uses contour lines to precisely represent the size, shape and elevation of the features of the land



7. **transported soil** - soil that has been moved or transported and deposited at a distance from its parent rock



8. **weathering** - the natural processes that break large rock into smaller and smaller pieces

