



Name _____ Class _____ Date _____

Match each of the following terms to its definition:

Antigen

Cancer

Axial skeleton

Appendicular skeleton

Antibodies

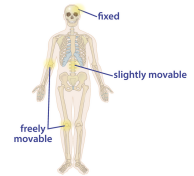
Acne

Adrenaline

Joint

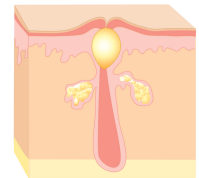
1. bones to bend or move

- a spot between two bones that allows the



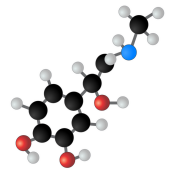
2. difficult to control

- a bacterial infection of the skin that is very



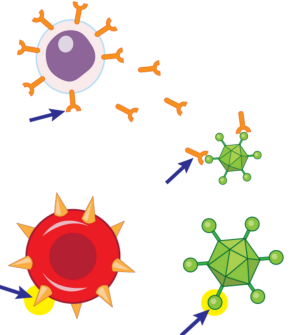
3. of energy and causes many other changes within the body

- a chemical that gives the body a sudden burst



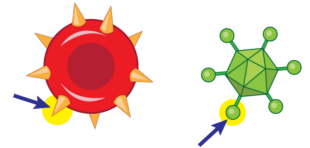
4. that attaches to an antigen and leads to its removal

- a specific protein produced by B lymphocytes



5. recognizes as part of the body or foreign to the body

- a molecule that the immune system



6. found in the flexible regions of the body, including shoulders, hips and limbs

- a part of the skeleton composed of 126 bones



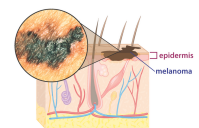
7. skeleton that consists of the skull, backbone (vertebrae) and rib cage

- the central, anchoring part of the bony



8. uncontrollably

- a disease that causes cells to divide





Name _____ Class _____ Date _____

Match each of the following terms to its definition:

Antigen

Cancer

Axial skeleton

Appendicular skeleton

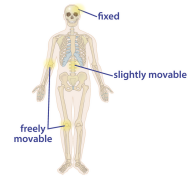
Antibodies

Acne

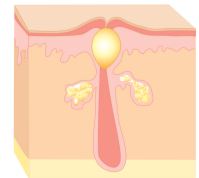
Adrenaline

Joint

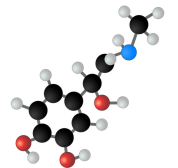
1. **joint** - a spot between two bones that allows the bones to bend or move



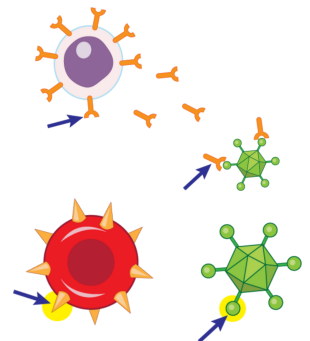
2. **acne** - a bacterial infection of the skin that is very difficult to control



3. **adrenaline** - a chemical that gives the body a sudden burst of energy and causes many other changes within the body



4. **antibodies** - a specific protein produced by B lymphocytes that attaches to an antigen and leads to its removal



5. **antigen** - a molecule that the immune system recognizes as part of the body or foreign to the body

6. **appendicular skeleton** - a part of the skeleton composed of 126 bones found in the flexible regions of the body, including shoulders, hips and limbs



7. **axial skeleton** - the central, anchoring part of the bony skeleton that consists of the skull, backbone (vertebrae) and rib cage

8. **cancer** - a disease that causes cells to divide uncontrollably

