



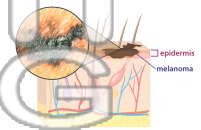
Name _____ Class _____ Date _____

Match each of the following terms to its definition:

Endocrine glands Central nervous system Cartilage Cardiac muscle

Dermis Connective tissue Cancer Embryo

1. _____ - a disease that causes cells to divide uncontrollably



2. _____ - the heart muscle composed of highly specialized cells that repeatedly contract without fatigue; the muscles are striated like skeletal muscles

3. _____ than bone

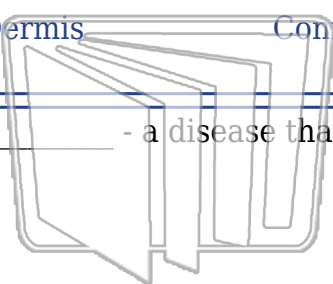
4. _____ occurs; c

5. _____ body tog and prot

6. _____ - the inner layer of skin, just above a layer of fat, which contains nerves, blood vessels, hairs, oil glands and sweat glands

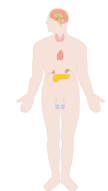
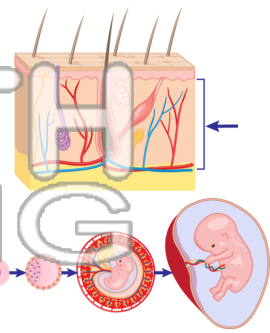
7. _____ - an organism in its earliest stage of growth, the stage of human development that spans the first eight or nine weeks of growth following fertilization and the formation of the zygote

8. _____ - glands found throughout the human body that act to control body functions by releasing hormones into the bloodstream



PREVIEW

Please [Sign In](#) or [Sign Up](#) to download the printable version of this worksheet





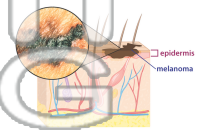
Name _____ Class _____ Date _____

Match each of the following terms to its definition:

Endocrine glands Central nervous system Cartilage Cardiac muscle

Dermis Connective tissue Cancer Embryo

1. **cancer** - a disease that causes cells to divide uncontrollably



2. **cardiac muscle** - the heart muscle composed of highly specialized cells that repeatedly contract without fatigue; the muscles are striated like skeletal muscle

3. **cartilage** - a flexible, fibrous connective tissue that is found between the bones of the skeleton

4. **central nervous system** - the part of the nervous system consisting of the brain and spinal cord

5. **connective tissue** - the body's support system; it connects different parts of the body and provides structural support

6. **dermis** - the inner layer of skin, just above a layer of fat, which contains nerves, blood vessels, hairs, oil glands and sweat glands

7. **embryo** - an organism in its earliest stage of growth; the stage of human development that spans the first eight or nine weeks of growth following fertilization and the formation of the zygote

8. **endocrine glands** - glands found throughout the human body that act to control body functions by releasing hormones into the bloodstream



PREVIEW

Please [Sign In](#) or [Sign Up](#) to download the printable version of this worksheet

