



Name _____ Class _____ Date _____

Match each of the following terms to its definition:

Fetus

Epithelial tissue

Immunization

Immovable joints

Endocrine glands

Homeostasis

Follicle

Epidermis

1. _____ - glands found throughout the human body that act to control body functions by releasing hormones into the bloodstream

2. _____ - the outermost layer of skin that is thinner than the dermis and does not contain blood vessels or nerve cells; made up of tightly bound cells that

3. _____ inside an

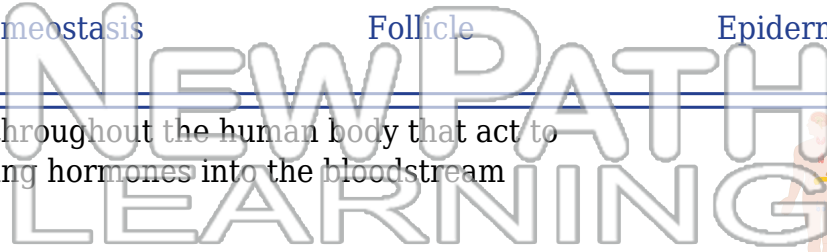
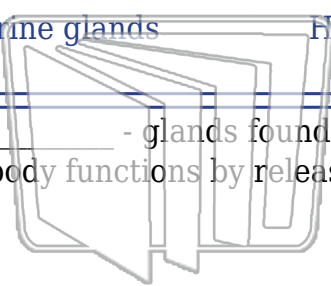
4. _____ birth; de

5. _____ dermis la

6. _____ - the tendency of a body system to maintain a stable, internal balance while faced with changes

7. _____ - joints between bones that do not allow movement

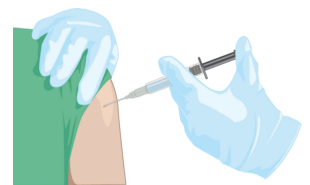
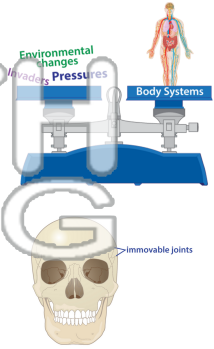
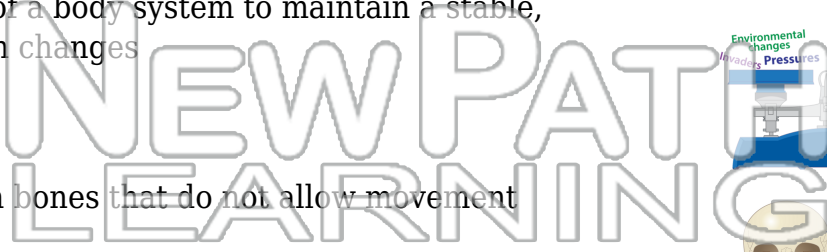
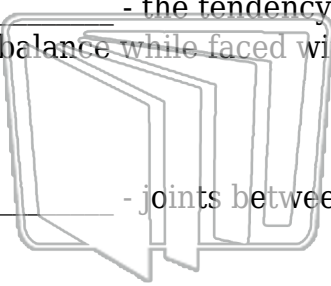
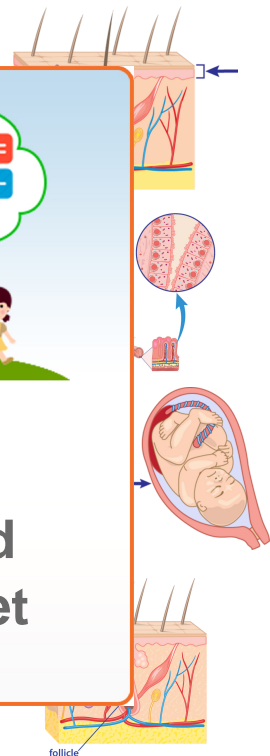
8. _____ - a boost to the immune system to protect the body against pathogens; can be active or passive



3. _____ inside an

PREVIEW

Please [Sign In](#) or [Sign Up](#) to download the printable version of this worksheet





Name _____ Class _____ Date _____

Match each of the following terms to its definition:

Fetus

Epithelial tissue

Immunization

Immovable joints

Endocrine glands

Homeostasis

Follicle

Epidermis

1. **endocrine glands** - glands found throughout the human body that act to control body functions by releasing hormones into the bloodstream

2. **epidermis** - the outermost layer of skin that is thinner than the dermis and does not contain blood vessels or nerve cells; made up of tightly bound cells that

3. **epithelial tissue** - both inside and outside the body

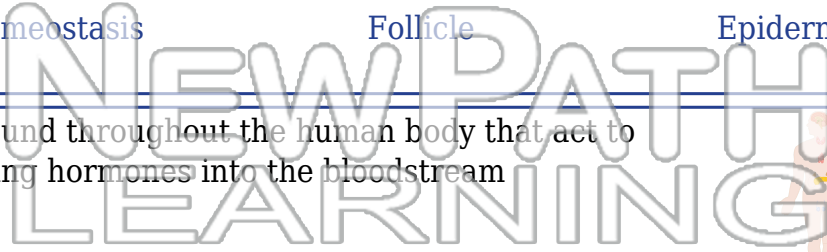
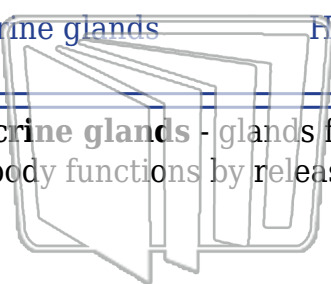
4. **fetus** - defined by the presence of a head and tail

5. **follicle** - dermis layer of skin

6. **homeostasis** - the tendency of a body system to maintain a stable, internal balance while faced with changes

7. **immovable joints** - joints between bones that do not allow movement

8. **immunization** - a boost to the immune system to protect the body against pathogens; can be active or passive



PREVIEW

Please [Sign In](#) or [Sign Up](#) to download the printable version of this worksheet

