



Name _____ Class _____ Date _____

Match each of the following terms to its definition:

Sprain

Voluntary muscle

Stress

Smooth muscle

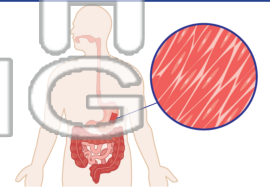
Synovial joints

Allergic reaction

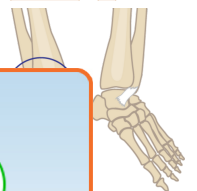
Tendon

Synapse

1. _____ - muscle that is not consciously controlled (involuntary muscle) such as the muscles that move food through the digestive tract



2. _____ - an injury to the ligaments at a joint; a sprained ankle is an example



3. _____ pulling or upsetting

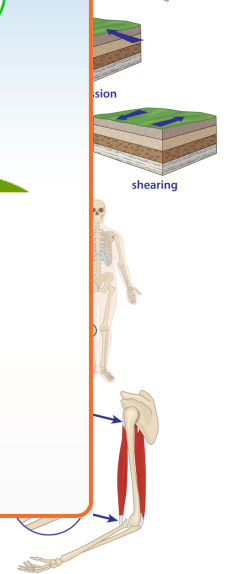


4. _____ of movement

5. _____ muscle that attaches

PREVIEW
Please [Sign In](#) or [Sign Up](#) to download the printable version of this worksheet

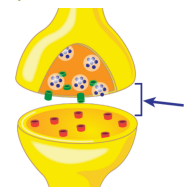
6. _____ - a muscle that you are able to control



7. _____ - an overreaction by the body's immune system when a person is exposed to certain materials such as dust, pollen, latex, or certain foods



8. _____ - a small space or gap between a neuron's axon tip and the dendrite of another neuron, a muscle, or another cell that the neuron is connected to





Name _____ Class _____ Date _____

Match each of the following terms to its definition:

Sprain

Voluntary muscle

Stress

Smooth muscle

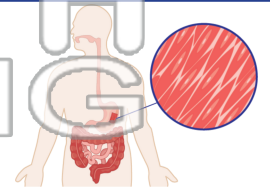
Synovial joints

Allergic reaction

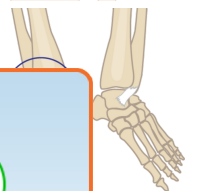
Tendon

Synapse

1. **smooth muscle** - muscle that is not consciously controlled (involuntary muscle) such as the muscles that move food through the digestive tract



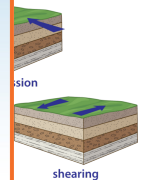
2. **sprain** - an injury to the ligaments at a joint; a sprained ankle is an example



3. **stress** - pressure or force applied to rocks; also a situation that causes stress



4. **synovial joints** - joints that allow for a wide range of movement

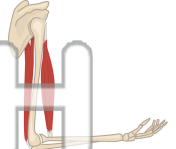
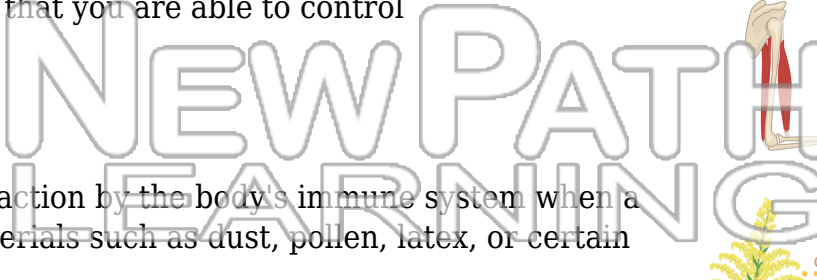
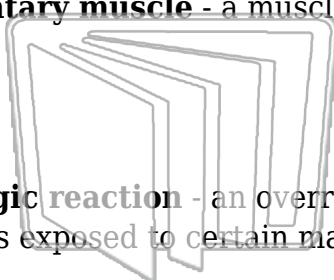


5. **tendon** - a cord of fibrous tissue that attaches muscle to bone

PREVIEW
Please [Sign In](#) or [Sign Up](#) to download the printable version of this worksheet



6. **voluntary muscle** - a muscle that you are able to control



7. **allergic reaction** - an overreaction by the body's immune system when a person is exposed to certain materials such as dust, pollen, latex, or certain foods



8. **synapse** - a small space or gap between a neuron's axon tip and the dendrite of another neuron, a muscle, or another cell that the neuron is connected to

