



Name \_\_\_\_\_ Class \_\_\_\_\_ Date \_\_\_\_\_

### Match each of the following terms to its definition:

Pathogen

Phagocyte

Pacemaker

Plasma

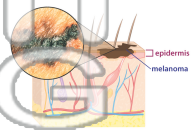
Pancreas

Platelets

Peristalsis

Noninfectious disease

1. \_\_\_\_\_ - diseases that are not spread from one person to another, such as diabetes and cancer



2. \_\_\_\_\_ - a group of cells that send out signals that cause the heart to contract



3. \_\_\_\_\_ enzymes hormone

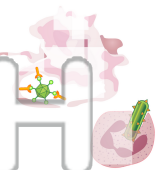


4. \_\_\_\_\_ infection

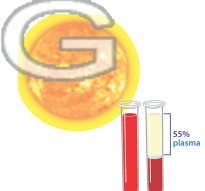
5. \_\_\_\_\_ move thr

**PREVIEW**  
Please [Sign In](#) or [Sign Up](#) to download the printable version of this worksheet

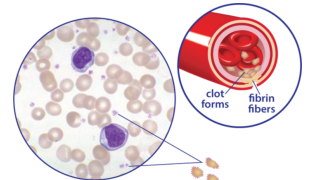
6. \_\_\_\_\_ - a white blood cell that engulfs an invading pathogen and destroys it



7. \_\_\_\_\_ - hot gases that make up the Sun; also the liquid part of the blood



8. \_\_\_\_\_ - fragments of cells that are critical to forming blood clots





Name \_\_\_\_\_ Class \_\_\_\_\_ Date \_\_\_\_\_

**Match each of the following terms to its definition:**

Pathogen

Phagocyte

Pacemaker

Plasma

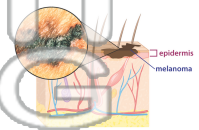
Pancreas

Platelets

Peristalsis

Noninfectious disease

**1. noninfectious disease** - diseases that are not spread from one person to another, such as diabetes and cancer



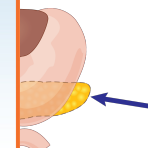
**2. pacemaker** - a group of cells that send out signals that cause the heart to contract



**3. pancreas** - an organ that releases enzymes into the small intestine and hormones into the bloodstream



**4. pathogen** - a microorganism that causes disease



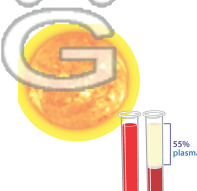
**5. peristalsis** - the involuntary contractions and relaxations of muscles that move food through the digestive tract



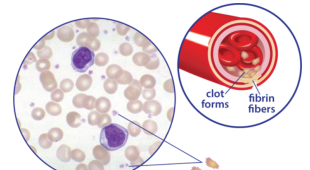
**6. phagocyte** - a white blood cell that engulfs an invading pathogen and destroys it



**7. plasma** - the liquid part of the blood that carries cells and nutrients



**8. platelets** - fragments of cells that are critical to forming blood clots



**PREVIEW**

Please [Sign In](#) or [Sign Up](#) to download the printable version of this worksheet