



Name \_\_\_\_\_ Class \_\_\_\_\_ Date \_\_\_\_\_

### Match each of the following terms to its definition:

Mutation

Nucleus

Mendel, Gregor

Nucleotide

mRNA

Nitrogen base

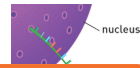
Multiple alleles

Phenotype

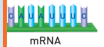
1. \_\_\_\_\_ - an Austrian monk and teacher who developed the foundation of genetics based on his pea plant studies



2. \_\_\_\_\_ - messenger ribonucleic acid; carries a code for producing proteins in the cell

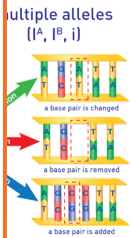


3. \_\_\_\_\_

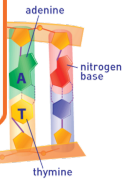


4. \_\_\_\_\_

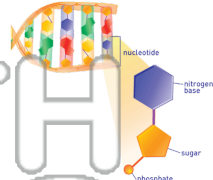
**PREVIEW**  
Please [Sign In](#) or [Sign Up](#) to download the printable version of this worksheet



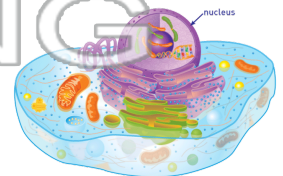
5. \_\_\_\_\_  
DNA or RNA molecule



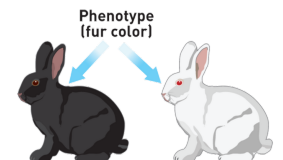
6. \_\_\_\_\_ - structural unit of DNA that consists of a sugar, phosphate, and nitrogen bases



7. \_\_\_\_\_ - organelle that contains the genetic material (DNA) and serves as the control center of the cell



8. \_\_\_\_\_ - the physical appearance of a particular organism





Name \_\_\_\_\_ Class \_\_\_\_\_ Date \_\_\_\_\_

**Match each of the following terms to its definition:**

Mutation

Nucleus

Mendel, Gregor

Nucleotide

mRNA

Nitrogen base

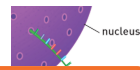
Multiple alleles

Phenotype

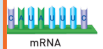
**1. Mendel, Gregor** - an Austrian monk and teacher who developed the foundation of genetics based on his pea plant studies



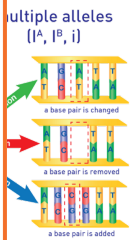
**2. mRNA** - messenger ribonucleic acid; carries a code for producing proteins in the cell



**3. multi**

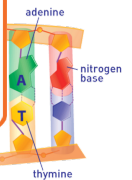


**4. mutat**

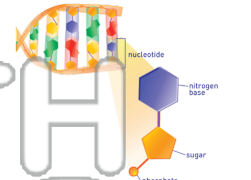


**5. nitrog**  
DNA or R  
molecule

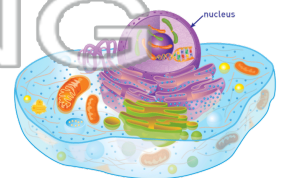
**PREVIEW**  
Please [Sign In](#) or [Sign Up](#) to download the printable version of this worksheet



**6. nucleotide** - structural unit of DNA that consists of a sugar, phosphate, and nitrogen bases



**7. nucleus** - organelle that contains the genetic material (DNA) and serves as the control center of the cell



**8. phenotype** - the physical appearance of a particular organism

