



Name \_\_\_\_\_ Class \_\_\_\_\_ Date \_\_\_\_\_

### Match each of the following terms to its definition:

Lipids

Composite

Protein

Carbohydrates

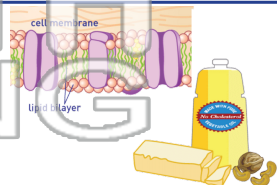
Organic compound

DNA

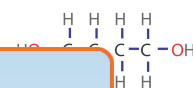
Starch

Polymer

1. \_\_\_\_\_ - nutrients also known as fats and oils which are made from the elements carbon, hydrogen and oxygen, are used for energy, key components of cell membranes



2. \_\_\_\_\_ - compound that contains the element carbon, which most living organisms are made from



3. \_\_\_\_\_

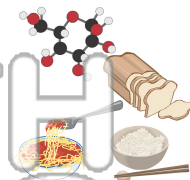


4. \_\_\_\_\_  
hydrogen  
componen

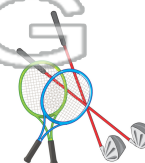
## PREVIEW

Please [Sign In](#) or [Sign Up](#) to download the printable version of this worksheet

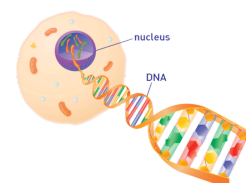
6. \_\_\_\_\_ - nutrients that are made up of carbon, hydrogen and oxygen; a major source of energy for humans and other living organisms



7. \_\_\_\_\_ - a combination of at least two or more substances, one of which is usually a polymer



8. \_\_\_\_\_ - deoxyribonucleic acid; genetic material within the nucleus





Name \_\_\_\_\_ Class \_\_\_\_\_ Date \_\_\_\_\_

**Match each of the following terms to its definition:**

Lipids

Composite

Protein

Carbohydrates

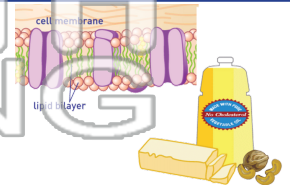
Organic compound

DNA

Starch

Polymer

**1. lipids** - nutrients also known as fats and oils which are made from the elements carbon, hydrogen and oxygen, are used for energy; key components of cell membranes



**2. organic compound** - compound that contains the element carbon, which most living organisms are made from

**3. polym**

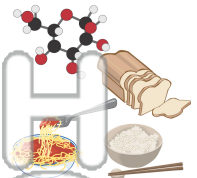


**4. prote**  
hydrogen  
compon

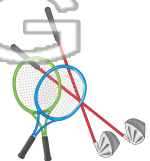
**5. starch**

**PREVIEW**  
Please [Sign In](#) or [Sign Up](#) to download the printable version of this worksheet

**6. carbohydrates** - nutrients that are made up of carbon, hydrogen and oxygen; a major source of energy for humans and other living organisms



**7. composite** - a combination of at least two or more substances, one of which is usually a polymer



**8. DNA** - deoxyribonucleic acid; genetic material within the nucleus

