



Name _____ Class _____ Date _____

Match each of the following terms to its definition:

Emphysema

Alveoli

Bronchi

Complex carbohydrates

Esophagus

Bile

Capillaries

Lungs

1. _____ - the organ that animals who live on land use to breathe

2. _____ - small sacs within the lungs that specialize in the exchange of gas between the blood and air

3. _____
the gall b

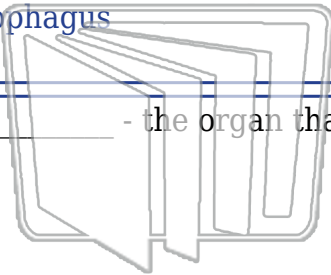
4. _____
and out c

5. _____
between

6. _____ - very large, energy-rich molecules made up of many smaller units of carbohydrate and found in many plant foods such as rice and grains

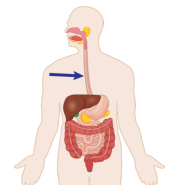
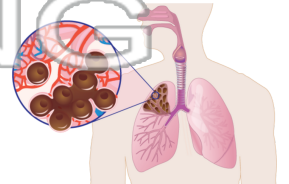
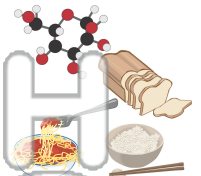
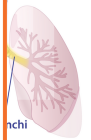
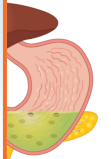
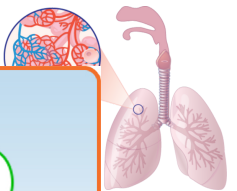
7. _____ - a disease of the lungs very common in smokers, where the air spaces enlarge to where they no longer function

8. _____ - a tube of muscle that connects the mouth to the stomach



PREVIEW

Please [Sign In](#) or [Sign Up](#) to download the printable version of this worksheet





Name _____ Class _____ Date _____

Match each of the following terms to its definition:

Emphysema

Alveoli

Bronchi

Complex carbohydrates

Esophagus

Bile

Capillaries

Lungs

1. **lungs** - the organ that animals who live on land use to breathe

2. **alveoli** - small sacs within the lungs that specialize in the exchange of gas between the blood and air

3. **bile** - bladder t

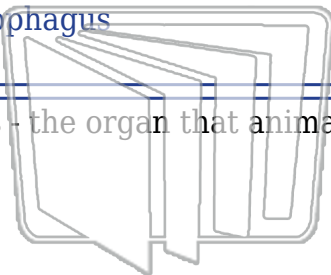
4. **bronchi** - out of the

5. **capillaries** - between

6. **complex carbohydrates** - very large, energy-rich molecules made up of many smaller units of carbohydrate and found in many plant foods such as rice and grains

7. **emphysema** - a disease of the lungs very common in smokers, where the air spaces enlarge to where they no longer function

8. **esophagus** - a tube of muscle that connects the mouth to the stomach




PREVIEW

Please [Sign In](#) or [Sign Up](#) to download the printable version of this worksheet

