



Name _____ Class _____ Date _____

Match each of the following terms to its definition:

Pancreas

Peristalsis

Nephrons

Hypertension

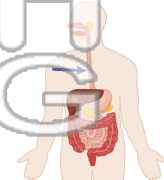
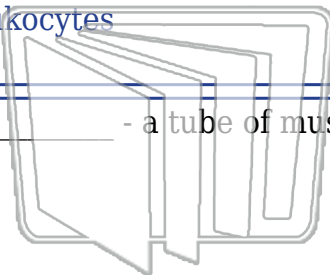
Leukocytes

Larynx

Excretion

Esophagus

1. _____ - a tube of muscle that connects the mouth to the stomach



2. _____ - the actual process of waste removal



3. _____ factors of alcohol c

PREVIEW

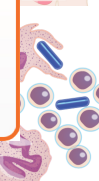
Please [Sign In](#) or [Sign Up](#) to download the printable version of this worksheet



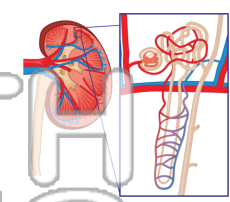
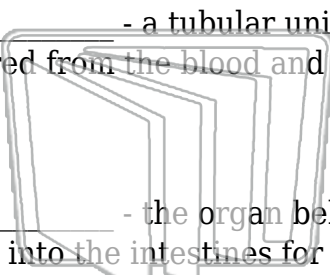
4. _____ just belo



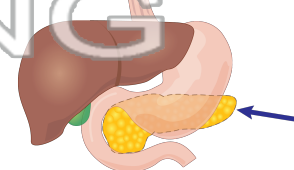
5. _____ defense a



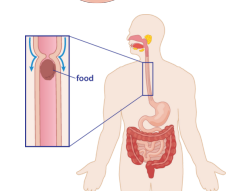
6. _____ - a tubular unit within the kidney in which waste products are filtered from the blood and urine is produced



7. _____ - the organ behind the stomach that releases digestive enzymes into the intestines for chemical digestion of foods; also releases hormones into the bloodstream to help regulate carbohydrate levels



8. _____ - wavelike smooth muscle contractions that force food to move through the digestive system





Name _____ Class _____ Date _____

Match each of the following terms to its definition:

Pancreas

Peristalsis

Nephrons

Hypertension

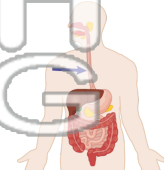
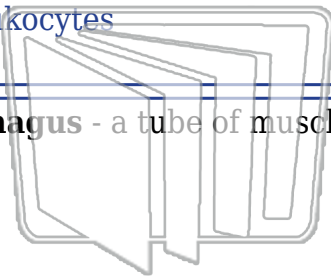
Leukocytes

Larynx

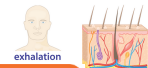
Excretion

Esophagus

1. **esophagus** - a tube of muscle that connects the mouth to the stomach



2. **excretion** - the actual process of waste removal



3. **hypertension** - a condition of the blood vessels in which the blood pressure is too high



4. **larynx** - the epiglottis is a flap of cartilage at the top of the trachea that prevents food from entering the lungs

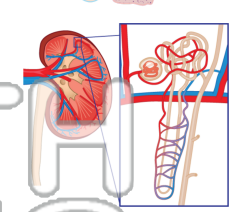


5. **leukocytes** - white blood cells that fight against infection

PREVIEW

Please [Sign In](#) or [Sign Up](#) to download the printable version of this worksheet

6. **nephrons** - a tubular unit within the kidney in which waste products are filtered from the blood and urine is produced



7. **pancreas** - the organ behind the stomach that releases digestive enzymes into the intestines for chemical digestion of foods; also releases hormones into the bloodstream to help regulate carbohydrate levels



8. **peristalsis** - wavelike smooth muscle contractions that force food to move through the digestive system

