



Name _____ Class _____ Date _____

Match each of the following terms to its definition:

Dermis

Antigen

Antibodies

Appendicular skeleton

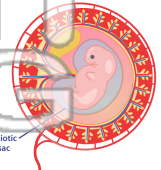
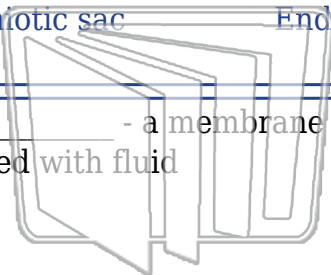
Amniotic sac

Endocrine glands

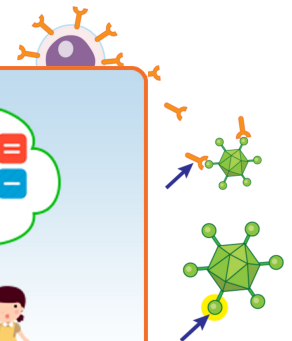
Endocrine system

Axial skeleton

1. _____ - a membrane that surrounds an embryo and develops into a sac filled with fluid



2. _____ - a specific protein produced by B lymphocytes that attaches to an antigen and leads to its removal



3. _____ the body



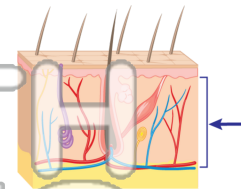
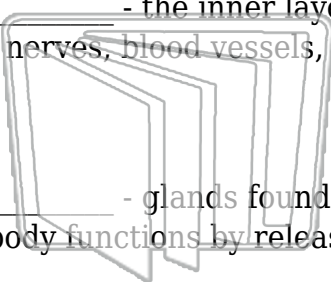
4. _____ flexible r

5. _____ consists

PREVIEW

Please [Sign In](#) or [Sign Up](#) to download the printable version of this worksheet

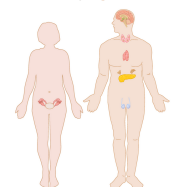
6. _____ - the inner layer of skin, just above a layer of fat, which contains nerves, blood vessels, hairs, oil glands and sweat glands



7. _____ - glands found throughout the human body that act to control body functions by releasing hormones into the bloodstream



8. _____ - a body system made up of different glands that control long-term and short-term changes of the body, including many daily activities of the body





Name _____ Class _____ Date _____

Match each of the following terms to its definition:

Dermis

Antigen

Antibodies

Appendicular skeleton

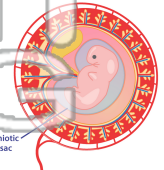
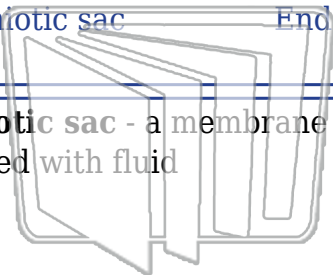
Amniotic sac

Endocrine glands

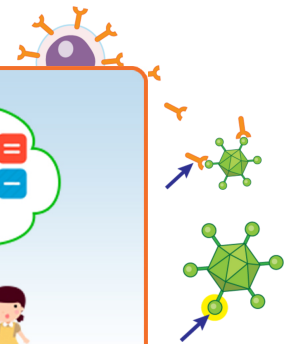
Endocrine system

Axial skeleton

1. **amniotic sac** - a membrane that surrounds an embryo and develops into a sac filled with fluid



2. **antibodies** - a specific protein produced by B lymphocytes that attaches to an antigen and leads to its removal



3. **antigen** - a substance that causes the body to produce antibodies



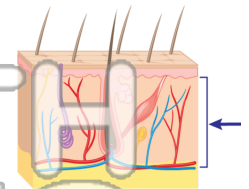
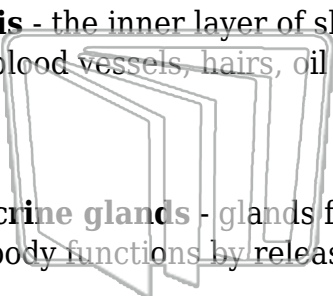
4. **appendicular skeleton** - the bones of the arms and legs

5. **axial skeleton** - the skull, spine, and ribcage

PREVIEW

Please [Sign In](#) or [Sign Up](#) to download the printable version of this worksheet

6. **dermis** - the inner layer of skin, just above a layer of fat, which contains nerves, blood vessels, hairs, oil glands and sweat glands



7. **endocrine glands** - glands found throughout the human body that act to control body functions by releasing hormones into the bloodstream



8. **endocrine system** - a body system made up of different glands that control long-term and short-term changes of the body, including many daily activities of the body

