



Name _____ Class _____ Date _____

Match each of the following terms to its definition:

Endocrine system

Epidermis

Hormones

Fetus

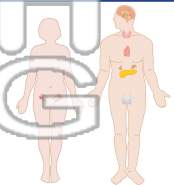
Inflammation

Hypothalamus

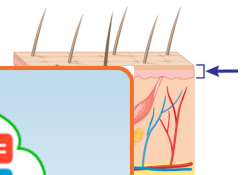
Immunization

Estrogen

1. _____ - a body system made up of different glands that control long-term and short-term changes of the body, including many daily activities of the body



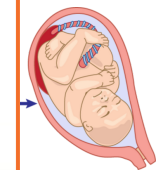
2. _____ - the outermost layer of skin that is thinner than the dermis and does not contain blood vessels or nerve cells; made up of tightly bound cells that



3. _____ physical



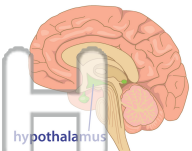
4. _____ birth; de



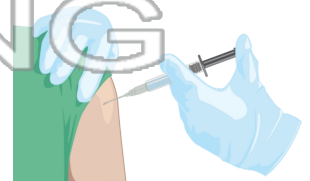
5. _____ wide var growth a

PREVIEW
Please [Sign In](#) or [Sign Up](#) to download the printable version of this worksheet

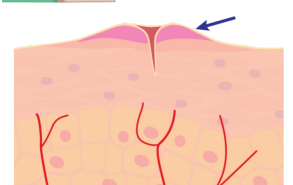
6. _____ - a small part of the brain which links the nervous system and the endocrine system together



7. _____ - a boost to the immune system to protect the body against pathogens; can be active or passive



8. _____ - the body's non-specific, general response to injury; acts as a first-line of defense against infection





Name _____ Class _____ Date _____

Match each of the following terms to its definition:

Endocrine system

Epidermis

Hormones

Fetus

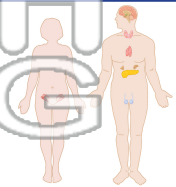
Inflammation

Hypothalamus

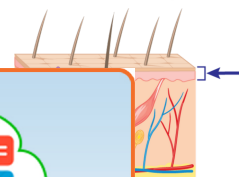
Immunization

Estrogen

1. **endocrine system** - a body system made up of different glands that control long-term and short-term changes of the body, including many daily activities of the body



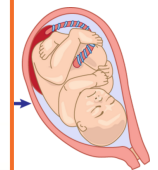
2. **epidermis** - the outermost layer of skin that is thinner than the dermis and does not contain blood vessels or nerve cells; made up of tightly bound cells that



3. **estrogen** - a hormone that is characteristic of females and is responsible for the development of secondary sex characteristics



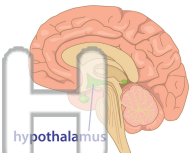
4. **fetus** - a developing human embryo from the 9th week of development until birth



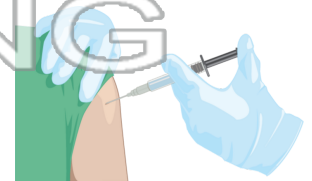
5. **hormones** - chemical messengers that travel through the bloodstream to regulate the body's growth and metabolism

PREVIEW
Please [Sign In](#) or [Sign Up](#) to download the printable version of this worksheet

6. **hypothalamus** - a small part of the brain which links the nervous system and the endocrine system together



7. **immunization** - a boost to the immune system to protect the body against pathogens; can be active or passive



8. **inflammation** - the body's non-specific, general response to injury; acts as a first-line of defense against infection

