



Name _____ Class _____ Date _____

Match each of the following terms to its definition:

Semen

Umbilical cord

Target cell

Testosterone

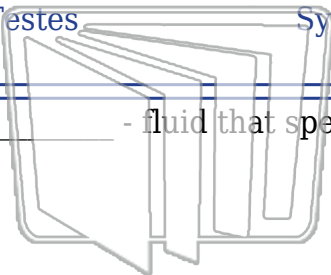
Testes

Synovial joints

Sprain

Uterus

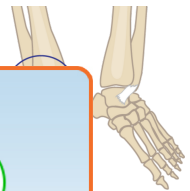
1. _____ - fluid that sperm travel within



NEW PATH
LEARNING



2. _____ - an injury to the ligaments at a joint; a sprained ankle is an example



3. _____ of movement



4. _____ chemical

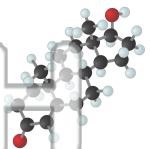
5. _____ testosterone

PREVIEW
Please [Sign In](#) or [Sign Up](#) to download the printable version of this worksheet

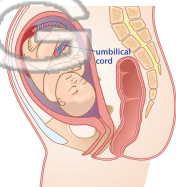
6. _____ - a hormone produced by the testes that controls the physical characteristics of men



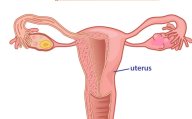
NEW PATH
LEARNING



7. _____ - a structure that forms between the mother and the embryo during pregnancy



8. _____ - a muscular organ where an egg develops after fertilization





Name _____ Class _____ Date _____

Match each of the following terms to its definition:

Semen

Umbilical cord

Target cell

Testosterone

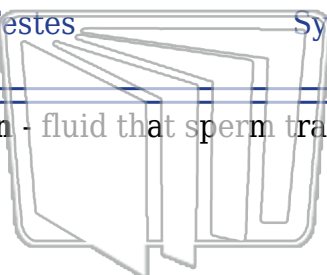
Testes

Synovial joints

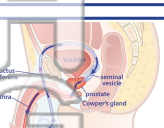
Sprain

Uterus

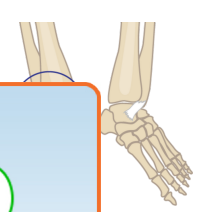
1. **semen** - fluid that sperm travel within



NEW PATH LEARNING



2. **sprain** - an injury to the ligaments at a joint; a sprained ankle is an example



3. **synovial joints** of movement



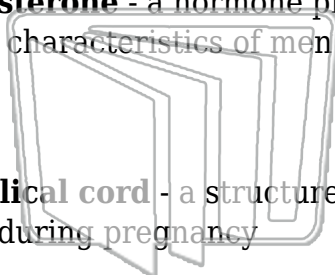
4. **target cell** chemical

5. **testes** the sperm

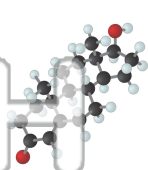
PREVIEW

Please [Sign In](#) or [Sign Up](#) to download the printable version of this worksheet

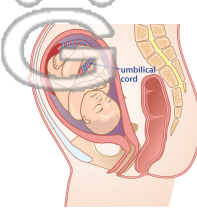
6. **testosterone** - a hormone produced by the testes that controls the physical characteristics of men



NEW PATH LEARNING



7. **umbilical cord** - a structure that forms between the mother and the embryo during pregnancy



8. **uterus** - a muscular organ where an egg develops after fertilization

