



Name _____ Class _____ Date _____

Match each of the following terms to its definition:

Cardiac muscle

Axon

Appendicular skeleton

Autonomic nervous system

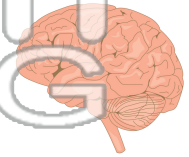
Axial skeleton

Brain

Brainstem

Cartilage

1. _____ - located within the skull; it is an organ that controls most of the different functions of the body



2. _____ - a part of the skeleton composed of 126 bones found in the flexible regions of the body, including shoulders, hips and limbs



3. _____
involunta

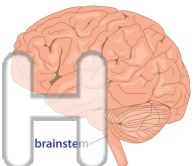


4. _____
consists

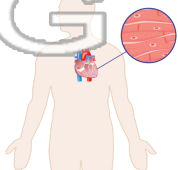
5. _____
body of t

PREVIEW
Please [Sign In](#) or [Sign Up](#) to download the printable version of this worksheet

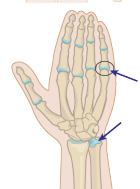
6. _____ - the portion of the brain that controls the involuntary muscles of the body



7. _____ - the heart muscle composed of highly specialized cells that repeatedly contract without fatigue; the muscles are striated like skeletal muscles and are involuntary like smooth muscles



8. _____ - connective tissue that is flexible and strong, but softer than bone





Name _____ Class _____ Date _____

Match each of the following terms to its definition:

Cardiac muscle

Axon

Appendicular skeleton

Autonomic nervous system

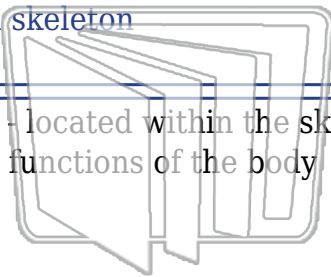
Axial skeleton

Brain

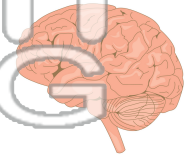
Brainstem

Cartilage

1. **brain** - located within the skull; it is an organ that controls most of the different functions of the body



NEW PATH LEARNING



2. **appendicular skeleton** - a part of the skeleton composed of 126 bones found in the flexible regions of the body, including shoulders, hips and limbs



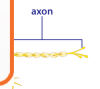
3. **autonomic nervous system** - the part of the nervous system that controls involuntary functions



4. **axial skeleton** - consists of the skull, spine and ribcage



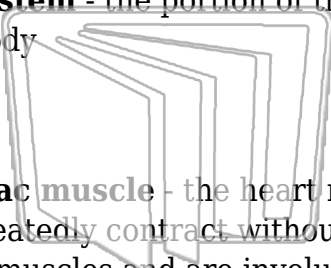
5. **axon** - the long, thin projection of a neuron that carries electrical impulses away from the cell body



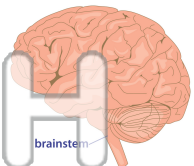
PREVIEW

Please [Sign In](#) or [Sign Up](#) to download the printable version of this worksheet

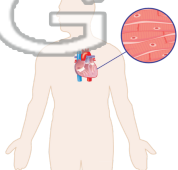
6. **brainstem** - the portion of the brain that controls the involuntary muscles of the body



NEW PATH LEARNING



7. **cardiac muscle** - the heart muscle composed of highly specialized cells that repeatedly contract without fatigue; the muscles are striated like skeletal muscles and are involuntary like smooth muscles



8. **cartilage** - connective tissue that is flexible and strong, but softer than bone

