



Name \_\_\_\_\_ Class \_\_\_\_\_ Date \_\_\_\_\_

### Match each of the following terms to its definition:

Eardrum

Endocrine glands

Dendrite

Cochlea

Cerebellum

Cornea

Central nervous system

Cartilage

1. \_\_\_\_\_ - connective tissue that is flexible and strong, but softer than bone

2. \_\_\_\_\_ - the brain and spinal cord where higher neuron function occurs; controls the functions of the body

3. \_\_\_\_\_ from the judging,

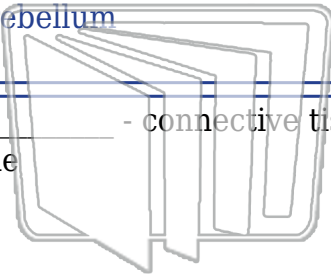
4. \_\_\_\_\_ liquid and vibrate a

5. \_\_\_\_\_

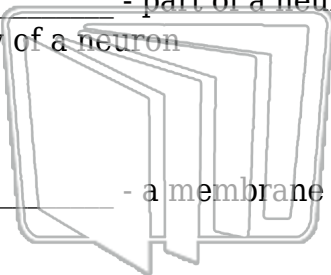
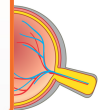
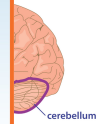
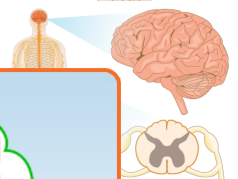
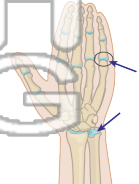
6. \_\_\_\_\_ - part of a neuron that carries nerve impulses toward the cell body of a neuron

7. \_\_\_\_\_ - a membrane that vibrates when sound waves reach it

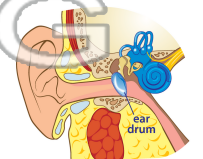
8. \_\_\_\_\_ - glands found throughout the human body that act to control body functions by releasing hormones into the bloodstream



NEW PATH LEARNING



NEW PATH LEARNING





Name \_\_\_\_\_ Class \_\_\_\_\_ Date \_\_\_\_\_

**Match each of the following terms to its definition:**

Eardrum

Endocrine glands

Dendrite

Cochlea

Cerebellum

Cornea

Central nervous system

Cartilage

1. **cartilage** - connective tissue that is flexible and strong, but softer than bone

2. **central nervous system** - the brain and spinal cord where higher neuron function occurs; controls the functions of the body

3. **cerebellum** - part of the brain that controls movement and balance

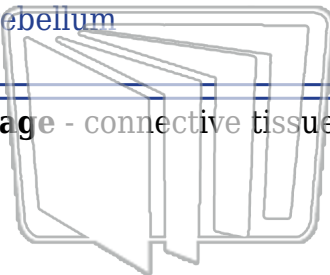
4. **cochlea** - part of the ear that converts vibrations into electrical signals

5. **cornea** - the clear, outer layer of the eye that helps focus light

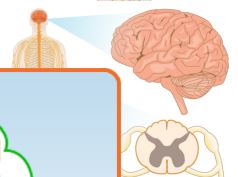
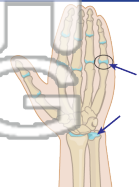
6. **dendrite** - part of a neuron that carries nerve impulses toward the cell body of a neuron

7. **eardrum** - a membrane that vibrates when sound waves reach it

8. **endocrine glands** - glands found throughout the human body that act to control body functions by releasing hormones into the bloodstream

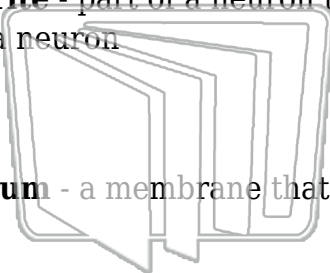


NEW PATH  
LEARNING



PREVIEW

Please [Sign In](#) or [Sign Up](#) to download the printable version of this worksheet



NEW PATH  
LEARNING

