



Name _____ Class _____ Date _____

Match each of the following terms to its definition:

Somatic nervous system

Smooth muscle

Synovial joints

Spinal cord

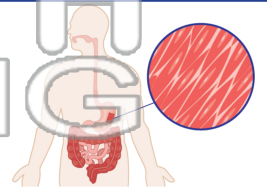
Sprain

Synapse

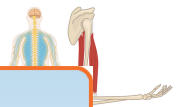
Tendon

Brain

1. _____ - muscle that is not consciously controlled (involuntary muscle) such as the muscles that move food through the digestive tract



2. _____ - the nerves of the peripheral nervous system that control voluntary movements



3. _____ majority

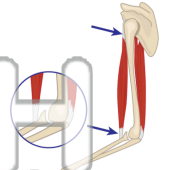


4. _____ example

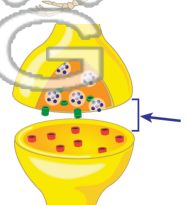
5. _____ of movement

PREVIEW
Please [Sign In](#) or [Sign Up](#) to download the printable version of this worksheet

6. _____ - very strong bands of dense connective tissue that connect muscle to bone; a strong connective tissue at the end of a muscle that attaches your muscles to bones



7. _____ - a small space or gap between a neuron's axon tip and the dendrite of another neuron, a muscle, or another cell that the neuron is connected to



8. _____ - located within the skull; it is an organ that controls most of the different functions of the body





Name _____ Class _____ Date _____

Match each of the following terms to its definition:

Somatic nervous system

Smooth muscle

Synovial joints

Spinal cord

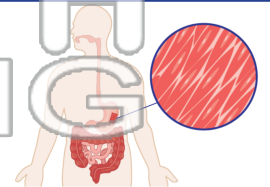
Sprain

Synapse

Tendon

Brain

1. **smooth muscle** - muscle that is not consciously controlled (involuntary muscle) such as the muscles that move food through the digestive tract



2. **somatic nervous system** - the nerves of the peripheral nervous system that control voluntary movements

3. **spinal majority**

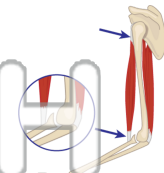


4. **sprain example**

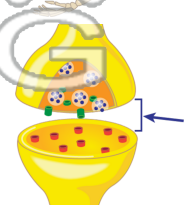
5. **synov of movem**

PREVIEW
Please [Sign In](#) or [Sign Up](#) to download the printable version of this worksheet

6. **tendon** - very strong bands of dense connective tissue that connect muscle to bone; a strong connective tissue at the end of a muscle that attaches your muscles to bones



7. **synapse** - a small space or gap between a neuron's axon tip and the dendrite of another neuron, a muscle, or another cell that the neuron is connected to



8. **brain** - located within the skull; it is an organ that controls most of the different functions of the body

