



Name \_\_\_\_\_ Class \_\_\_\_\_ Date \_\_\_\_\_

### Match each of the following terms to its definition:

Doppler radar

Hurricane

Cumulonimbus cloud

Relative humidity

Cumulus clouds

Metric system

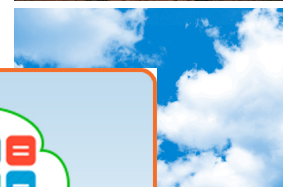
Precipitation

Isobars

1. \_\_\_\_\_ - a very large, dense cumulus cloud that is associated with thunderstorms and severe weather



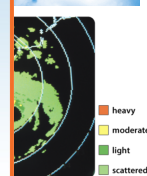
2. \_\_\_\_\_ - large puffy looking clouds typically associated with fair weather



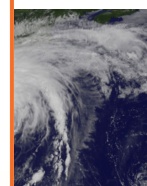
3. \_\_\_\_\_ location,

**PREVIEW**

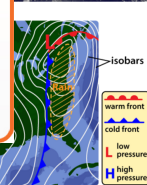
Please [Sign In](#) or [Sign Up](#) to download the printable version of this worksheet



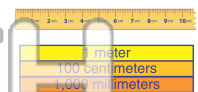
4. \_\_\_\_\_ has wind



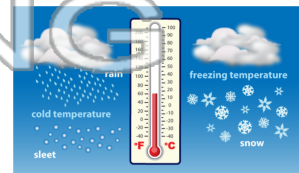
5. \_\_\_\_\_



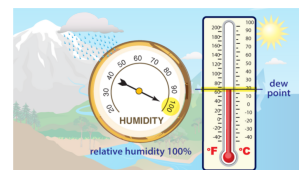
6. \_\_\_\_\_ - the internationally recognized system of measurements based on the number 10; it is also known as the International System of Units or simply SI



7. \_\_\_\_\_ - water that falls to the earth in the form of rain, snow, sleet, or hail



8. \_\_\_\_\_ - a percentage which compares the amount of water vapor in the air with the maximum amount of water vapor the air could hold at a specific temperature





Name \_\_\_\_\_ Class \_\_\_\_\_ Date \_\_\_\_\_

**Match each of the following terms to its definition:**

Doppler radar

Hurricane

Cumulonimbus cloud

Relative humidity

Cumulus clouds

Metric system

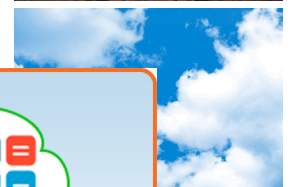
Precipitation

Isobars

1. **cumulonimbus cloud** - a very large, dense cumulus cloud that is associated with thunderstorms and severe weather



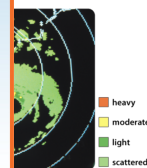
2. **cumulus clouds** - large puffy looking clouds typically associated with fair weather



3. **Doppler radar** location,

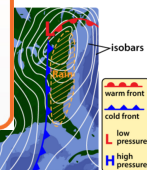
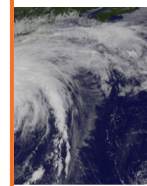


4. **hurricane** has wind

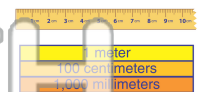


5. **isobar**

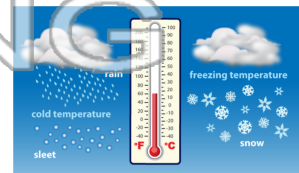
**PREVIEW**  
Please [Sign In](#) or [Sign Up](#) to download the printable version of this worksheet



6. **metric system** - the internationally recognized system of measurements based on the number 10; it is also known as the International System of Units or simply SI



7. **precipitation** - water that falls to the earth in the form of rain, snow, sleet, or hail



8. **relative humidity** - a percentage which compares the amount of water vapor in the air with the maximum amount of water vapor the air could hold at a specific temperature

