

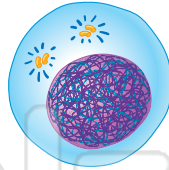


# Cell Reproduction

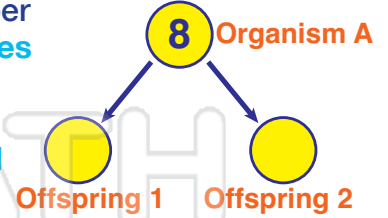
H.S. Bio

Name \_\_\_\_\_ Class \_\_\_\_\_ Date \_\_\_\_\_

- 1 Which **two processes** are involved in **mitotic cell division**? Circle the answer letter.
- nuclear duplication and cytoplasmic duplication
  - nuclear duplication and cytoplasmic division
  - oogenesis and cytoplasmic division



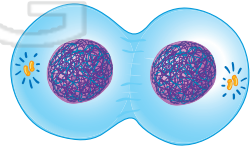
- 6 This diagram represents reproduction of **single-celled organism A**, which has a normal **chromosome number of 8**. Fill in the number of **chromosomes** in the **offspring** that result from normal **asexual reproduction**.



- 2 Which diagram best shows the process of **binary fission** in an **amoeba**? Check it.



- 7 What would most likely result if mitosis was **not accompanied** by **cytoplasmic division**?



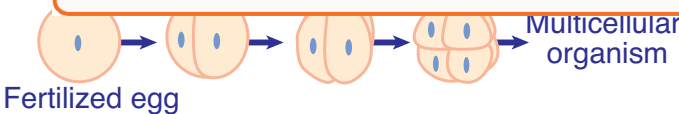
- 3 V  
r



## PREVIEW

Please [Sign In](#) or [Sign Up](#) to download the printable version of this worksheet

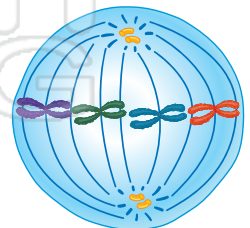
- 4 T  
e  
p



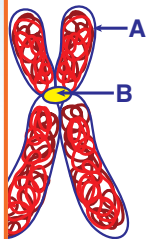
- meiosis, but **not** during mitosis?
- synapsis of chromosomes
  - chromosomal replication
  - spindle formation

- 5 Which statement is true of **both mitosis and meiosis**?
- Both occur only in reproductive cells.
  - The number of chromosomes is reduced by half.
  - DNA replication occurs before the division of the nucleus.

- 10 The cell in the diagram illustrates a stage of mitotic cell division. Name the **mitotic stage** represented.



nucleus  
nuclei



fiber

is during

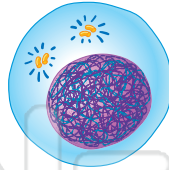


# Cell Reproduction - Answer Key

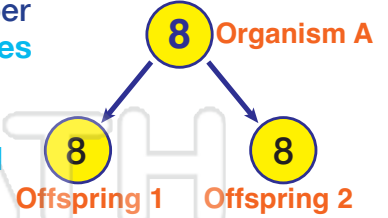
H.S. Bio

Name \_\_\_\_\_ Class \_\_\_\_\_ Date \_\_\_\_\_

- 1 Which **two processes** are involved in **mitotic cell division**? Circle the answer letter.
- a. nuclear duplication and cytoplasmic duplication
  - b. nuclear duplication and cytoplasmic division
  - c. oogenesis and cytoplasmic division



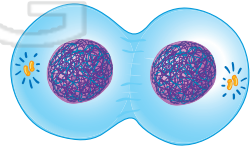
- 6 This diagram represents reproduction of **single-celled organism A**, which has a normal **chromosome number of 8**. Fill in the number of **chromosomes** in the **offspring** that result from normal **asexual reproduction**.



- 2 Which diagram best shows the process of **binary fission** in an **amoeba**? Check it.



- 7 What would most likely result if mitosis was **not accompanied** by **cytoplasmic division**?



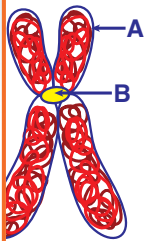
- 3 V  
r  
(



## PREVIEW

Please [Sign In](#) or [Sign Up](#) to download the printable version of this worksheet

nucleus  
nuclei



fiber

is during

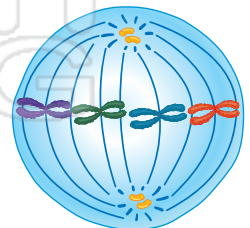
- 4 T  
e  
p
- 
- Fertilized egg → mitosis → Multicellular organism

- meiosis, but **not** during mitosis?

- a. synapsis of chromosomes
- b. chromosomal replication
- c. spindle formation

- 5 Which statement is true of **both mitosis and meiosis**?
- a. Both occur only in reproductive cells.
  - b. The number of chromosomes is reduced by half.
  - c. DNA replication occurs before the division of the nucleus.

- 10 The cell in the diagram illustrates a stage of mitotic cell division. Name the **mitotic stage** represented.



metaphase