

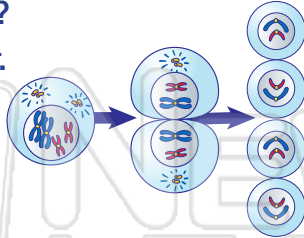


Name \_\_\_\_\_ Class \_\_\_\_\_ Date \_\_\_\_\_

1 Compared to the number of chromosomes contained in a **body cell** of a parent, how many **chromosomes** would normally be contained in a **gamete**?

Circle the answer letter.

- a. the same number
- b. twice as many
- c. half as many



6 In a certain species of mouse, gray fur (G) is dominant over **cream-colored fur** (g). If a homozygous gray mouse is crossed with a **cream colored mouse**, the genotype of the F<sub>1</sub> generation will most likely be \_\_\_\_\_.

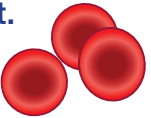
- a. 100% Gg
- b. 50% GG and 50% gg
- c. 75% Gg and 25% gg



2 Which diagram correctly illustrates the fusion of normal gametes that will most likely produce a **human male**? Check it.



7 Which **genotype** illustrates **codominance** of alleles that control blood type in humans? Circle it.



3 In a population, the frequency of a specific allele is 0.7. What is the frequency of the other allele?

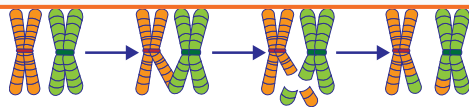


of an specific

## PREVIEW

Please [Sign In](#) or [Sign Up](#) to download the printable version of this worksheet

4



- a. a new combination of inheritable traits
- b. a genetic disorder
- c. an increase in the chromosome number

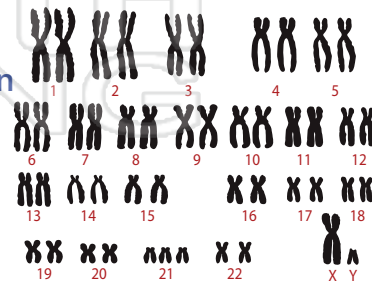
c. gametogenesis

5 Fill in the answer.

\_\_\_\_\_ developed **heredity principles** from his mathematical analysis of the results of **pea plant crosses**.

10 The chromosomes of a person with a **genetic disorder** are shown. This disorder **resulted from** \_\_\_\_\_.

- a. hybridization
- b. nondisjunction
- c. segregation



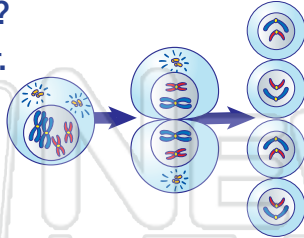


Name \_\_\_\_\_ Class \_\_\_\_\_ Date \_\_\_\_\_

1 Compared to the number of chromosomes contained in a **body cell** of a parent, how many **chromosomes** would normally be contained in a **gamete**?

Circle the answer letter.

- a. the same number
- b. twice as many
- c. half as many



6 In a certain species of mouse, gray fur (G) is dominant over **cream-colored fur** (g). If a homozygous gray mouse is crossed with a **cream colored mouse**, the genotype of the F<sub>1</sub> generation will most likely be \_\_\_\_\_.

- a. 100% Gg
- b. 50% GG and 50% gg
- c. 75% Gg and 25% gg



2 Which diagram correctly illustrates the fusion of normal gametes that will most likely produce a **human male**? Check it.



7 Which **genotype** illustrates **codominance** of alleles that control blood type in humans? Circle it.



3 In a le...  
the...  
a...  
b...  
c...

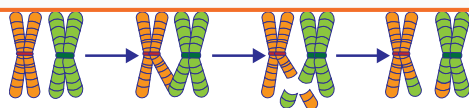


of an  
a specific

## PREVIEW

Please [Sign In](#) or [Sign Up](#) to download the printable version of this worksheet

4 T...  
T...



- a. a new combination of inheritable traits
- b. a genetic disorder
- c. an increase in the chromosome number

c. gametogenesis

5 Fill in the answer.

**Gregor Mendel** developed **heredity principles** from his mathematical analysis of the results of **pea plant crosses**.

10 The chromosomes of a person with a **genetic disorder** are shown. This disorder **resulted from** \_\_\_\_\_.

- a. hybridization
- b. nondisjunction
- c. segregation

