



# Introduction to Animals

H.S.  
Bio

Name \_\_\_\_\_ Class \_\_\_\_\_ Date \_\_\_\_\_

- 1 The ability of an organism to obtain food, seek shelter, and avoid predators is most directly related to the function of \_\_\_\_\_. Circle the answer.

reproduction      egestion  
locomotion      excretion



- 6 Which organism contains an **open transport system**? Circle it.



- 2 In **hydra**, new organisms can be produced from groups of cells that enlarge and stay **attached to the parent** for a time before breaking off and becoming independent. This **method of reproduction** is an example of \_\_\_\_\_.

- 7 In frogs and humans, **locomotion** is accomplished by means of \_\_\_\_\_.  
a. muscles and an exoskeleton  
b. a cartilaginous endoskeleton  
c. muscles and jointed appendages



## PREVIEW

Please [Sign In](#) or [Sign Up](#) to download the printable version of this worksheet

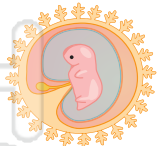
- 3

carnivores      omnivores  
producers      vegetarians



- 10 Most **mammals** have **adaptations for** \_\_\_\_\_.

- a. internal fertilization and internal development of the fetus  
b. internal fertilization and external development of the fetus  
c. external fertilization and internal development of the fetus



- 5 An **arctic food chain** consists of polar bears, fish, seaweed and seals. Which sequence shows the **correct flow of energy** between these organisms?

- a. seals → seaweed → fish → polar bears  
b. fish → seaweed → polar bears → seals  
c. seaweed → fish → seals → polar bears





# Introduction to Animals - Answer Key

H.S. Bio

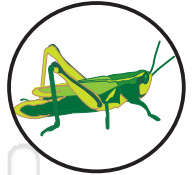
Name \_\_\_\_\_ Class \_\_\_\_\_ Date \_\_\_\_\_

1 The ability of an organism to obtain food, seek shelter, and avoid predators is most directly related to the function of \_\_\_\_\_. Circle the answer.

- reproduction
- egestion
- locomotion**
- excretion



6 Which organism contains an **open transport system**? Circle it.



2 In **hydra**, new organisms can be produced from groups of cells that enlarge and stay **attached to the parent** for a time before breaking off and becoming independent. This **method of reproduction** is an example of \_\_\_\_\_.

7 In frogs and humans, **locomotion** is accomplished by means of \_\_\_\_\_.

- a. muscles and an exoskeleton
- b. a cartilaginous endoskeleton
- c. muscles and jointed appendages



## PREVIEW

Please [Sign In](#) or [Sign Up](#) to download the printable version of this worksheet

3

- carnivores**
- omnivores
- producers
- vegetarians**



4

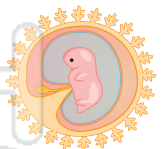
c. carnivore, predator, heterotroph, multicellular

5 An **arctic food chain** consists of polar bears, fish, seaweed and seals. Which sequence shows the **correct flow of energy** between these organisms?



- a. seals → seaweed → fish → polar bears
- b. fish → seaweed → polar bears → seals
- c. seaweed → fish → seals → polar bears

10 Most **mammals** have **adaptations for** \_\_\_\_\_.



- a. internal fertilization and internal development of the fetus
- b. internal fertilization and external development of the fetus
- c. external fertilization and internal development of the fetus