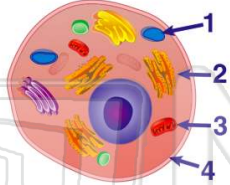




Name \_\_\_\_\_ Class \_\_\_\_\_ Date \_\_\_\_\_

1 Which organelle in the diagram below represents an **exception to the cell theory** because it contains genetic material and can reproduce within the cell?

- A 1
- B 2
- C 3
- D 4



2 Water is classified as an **inorganic compound** because it

- A does not contain nitrogen
- B does not contain carbon
- C contains hydrogen
- D contains oxygen



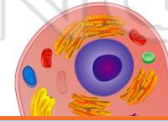
3 The series of diagrams below represents a **process** carried out by a **unicellular organism**.

This process is known as

- A autotrophic

4 Which activity is a **function** of all **living cells**?

- A synthesis
- B locomotion
- C anaerobic respiration



5



## PREVIEW

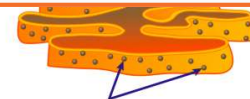
Please [Sign In](#) or [Sign Up](#) to download the printable version of this worksheet

7

living things.

- C Cell parts such as chloroplasts are self replicating.
- D Cells come from preexisting cells.

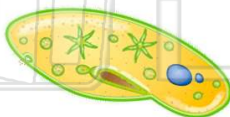
- C cell wall
- D ribosome



9

A **paramecium** eliminates **excess** water by means of

- A contractile vacuoles
- B lysosomes
- C an oral groove
- D a nucleolus

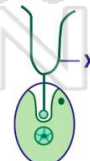


10

The diagram below represents a **unicellular green alga** known as **chlamydomonas**. **Structure X** helps chlamydomonas move through the pond in which it lives.

**Structure X** represents

- A a seta
- B an antenna
- C a tentacle
- D a flagellum

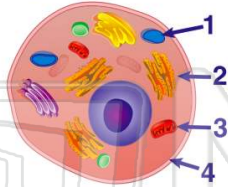




Name \_\_\_\_\_ Class \_\_\_\_\_ Date \_\_\_\_\_

1 Which organelle in the diagram below represents an **exception to the cell theory** because it contains genetic material and can reproduce within the cell?

- A 1
- B 2
- C 3
- D 4



C

2 Water is classified as an **inorganic compound** because it

- A does not contain nitrogen
- B does not contain carbon
- C contains hydrogen
- D contains oxygen



B

3 The series of diagrams below represents a **process** carried out by a **unicellular organism**.

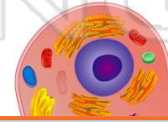
This process is known as

- A autotrophic

C

4 Which activity is a **function** of all **living cells**?

- A synthesis
- B locomotion
- C anaerobic respiration



A

5



D

## PREVIEW

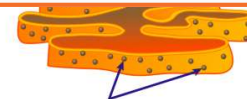
Please [Sign In](#) or [Sign Up](#) to download the printable version of this worksheet

7

living things.

- C Cell parts such as chloroplasts are self replicating.
- D Cells come from preexisting cells.

- C cell wall
- D ribosome

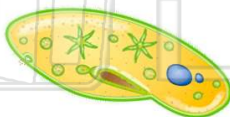


D

9

A **paramecium** eliminates **excess** water by means of

- A contractile vacuoles
- B lysosomes
- C an oral groove
- D a nucleolus



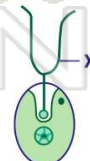
A

10

The diagram below represents a **unicellular green alga** known as **chlamydomonas**. **Structure X** helps chlamydomonas move through the pond in which it lives.

**Structure X** represents

- A a seta
- B an antenna
- C a tentacle
- D a flagellum



D