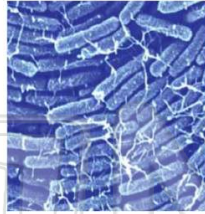




Name \_\_\_\_\_ Class \_\_\_\_\_ Date \_\_\_\_\_

1 What is the **role of bacteria and fungi** in an **ecosystem**?

- A to recycle waste materials
- B to produce carbon dioxide
- C to recycle water
- D to recycle oxygen



2 Organisms that have the ability to use an **atmospheric gas** to **produce** an organic nutrient are known as

- A herbivores
- B decomposers
- C carnivores
- D autotrophs



3 **Decomposition** and **decay** of organic matter are accomplished by the action of

- A green plants
- B bacteria and fungi



4 Which method of **reproduction** is shown in the diagram below?

- A stem cutting
- B budding



## PREVIEW

Please [Sign In](#) or [Sign Up](#) to download the printable version of this worksheet

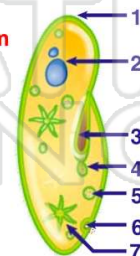
9 A scientist recently discovered a pond organism that is **unicellular**, contains **chloroplasts** and other membrane-bound organelles, and possesses a **flagellum**. In which **kingdom** is this organism classified?

- A monera
- B protista
- C fungi
- D plant



10 Which structures in the diagram of a **paramecium** below are most directly associated with the life function of **nutrition**?

- A 1, 3, 4, and 5
- B 2, 5, 6, and 7
- C 4, 5, and 7
- D 1, 2, and 7

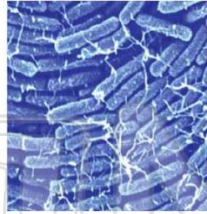




Name \_\_\_\_\_ Class \_\_\_\_\_ Date \_\_\_\_\_

1 What is the **role of bacteria and fungi** in an **ecosystem**?

**A** to recycle waste materials  
**B** to produce carbon dioxide  
**C** to recycle water  
**D** to recycle oxygen



(A)

2 Organisms that have the ability to use an **atmospheric gas** to **produce** an organic nutrient are known as

**A** herbivores  
**B** decomposers  
**C** carnivores  
**D** autotrophs



(D)

3 **Decomposition** and **decay** of organic matter are accomplished by the action of

**A** green plants  
**B** bacteria and fungi



(B)

4 Which method of **reproduction** is shown in the diagram below?

**A** stem cutting  
**B** budding



(D)



## PREVIEW

Please [Sign In](#) or [Sign Up](#) to download the printable version of this worksheet

7

**C** alcohol, CO<sub>2</sub>, and 2 ATP  
**D** CO<sub>2</sub>, H<sub>2</sub>O, and 26 ATP

**A** regeneration  
**B** vegetative propagation  
**C** asexual reproduction  
**D** gametogenesis

(C)

9 A scientist recently discovered a pond organism that is **unicellular**, contains **chloroplasts** and other membrane-bound organelles, and possesses a **flagellum**. In which **kingdom** is this organism classified?

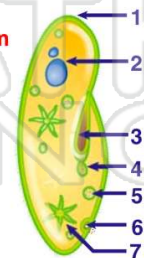
**A** monera  
**B** protista  
**C** fungi  
**D** plant



(B)

10 Which structures in the diagram of a **paramecium** below are most directly associated with the life function of **nutrition**?

**A** 1, 3, 4, and 5  
**B** 2, 5, 6, and 7  
**C** 4, 5, and 7  
**D** 1, 2, and 7



(A)