



Name _____ Class _____ Date _____

1 During **anaerobic respiration**, the chemical energy of a glucose molecule is gradually released, producing **36 ATP** and

- A NH₃ and O₂
- B NH₃ and CO₂
- C H₂O and O₂
- D H₂O and CO₂



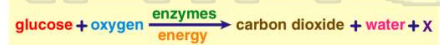
2 In which process do organisms transfer chemical bond energy from **organic molecules** to **ATP molecules**?

- A cyclosis
- B diffusion
- C digestion
- D respiration

3 During **aerobic respiration**, the **oxidation of glucose** results in the formation of

- A hydrogen and water
- B water and carbon dioxide

4 Name the **process** represented by the equation below.



PREVIEW

Please [Sign In](#) or [Sign Up](#) to download the printable version of this worksheet

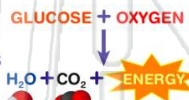
- 7
- C respiration
 - D active transport



- C the production of catalysts in vacuoles
- D enzymes that have the same genetic base sequence

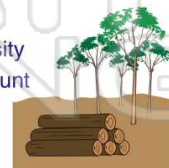
9 Which statement best describes **cellular respiration**?

- A It occurs in animal cells but not in plant cells.
- B It converts energy in food into a more usable form.
- C It uses carbon dioxide and produces oxygen.
- D It stores energy in food molecules.



10 Cutting down a rain forest and **planting agricultural crops**, such as coffee plants, would most likely result in

- A a decrease in biodiversity
- B an increase in the amount of energy recycled
- C a decrease in erosion
- D an increase in the amount of photosynthesis





Name _____ Class _____ Date _____

1 During **anaerobic respiration**, the chemical energy of a glucose molecule is gradually released, producing **36 ATP** and

- A NH₃ and O₂
- B NH₃ and CO₂
- C H₂O and O₂
- D H₂O and CO₂



A

2 In which process do organisms transfer chemical bond energy from **organic molecules** to **ATP molecules**?

- A cyclosis
- B diffusion
- C digestion
- D respiration

D

3 During **aerobic respiration**, the **oxidation of glucose** results in the formation of

- A hydrogen and water
- B water and carbon dioxide

B

4 Name the **process** represented by the equation below.



B

5



A

PREVIEW

Please [Sign In](#) or [Sign Up](#) to download the printable version of this worksheet

7

- C respiration
- D active transport

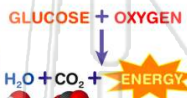


- C the production of catalysts in vacuoles
- D enzymes that have the same genetic base sequence

A

9 Which statement best describes **cellular respiration**?

- A It occurs in animal cells but not in plant cells.
- B It converts energy in food into a more usable form.
- C It uses carbon dioxide and produces oxygen.
- D It stores energy in food molecules.



B

10 Cutting down a rain forest and **planting agricultural crops**, such as coffee plants, would most likely result in

- A a decrease in biodiversity
- B an increase in the amount of energy recycled
- C a decrease in erosion
- D an increase in the amount of photosynthesis



A