



Plant Structure & Function

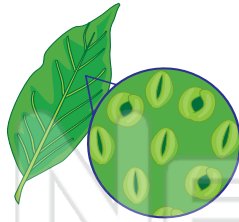
H.S.
Bio

Name _____ Class _____ Date _____

1 Gases move into intercellular spaces in **leaves** through **openings** known as _____.

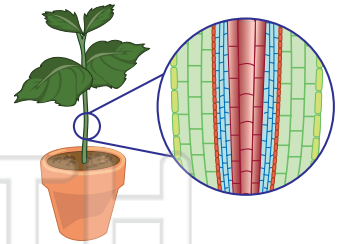
Circle the answer letter.

- a. stomates
- b. lenticels
- c. phloem tubes



6 Sugars are **transported** from the **leaves** to the **roots** of a plant in the _____.

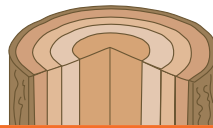
- a. xylem vessels
- b. phloem tubes
- c. guard cells



2 The **meristematic tissue layer** responsible for **growth** in the **diameter** of a **stem** is known as the _____.

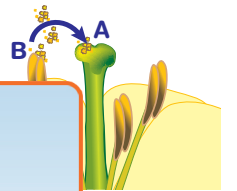
Circle the answer.

cuticle cambium



7 The **transfer** of **reproductive structures** from **B** to **A** shown in this flower diagram is known as _____.

- a. fertilization



3 In **evaporation** _____



PREVIEW

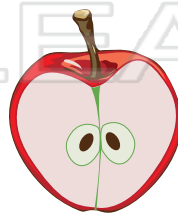
Please [Sign In](#) or [Sign Up](#) to download the printable version of this worksheet

4 T **d** the **e**

- a. surface of the cells are dry and the stomates are closed
- b. cells are dry and the stomates are open
- c. surface of these cells are moist and the stomates are open

5 Fill in the blank.

In **flowering plants**, the ripened **ovary** develops into a _____.



9 **tropism?**

- a. An apple develops from a flower.
- b. A stem bends towards the light.
- c. Oxygen diffuses out of a leaf.

10 The **loss of water** through **plant leaves** is known as _____.

- a. capillary action
- b. root pressure
- c. transpiration





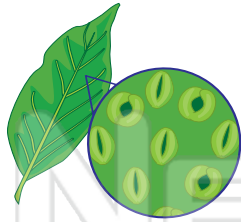
Plant Structure & Function - Answer Key

H.S. Bio

Name _____ Class _____ Date _____

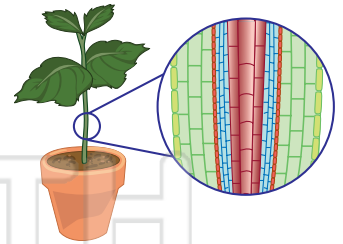
1 Gases move into intercellular spaces in leaves through openings known as _____.
Circle the answer letter.

- a. stomates
- b. lenticels
- c. phloem tubes



6 Sugars are transported from the leaves to the roots of a plant in the _____.

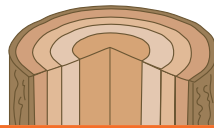
- a. xylem vessels
- b. phloem tubes
- c. guard cells



2 The meristematic tissue layer responsible for growth in the diameter of a stem is known as the _____.
Circle the answer.

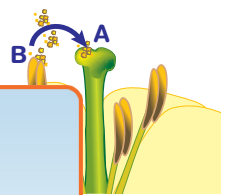
cuticle

cambium



7 The transfer of reproductive structures from B to A shown in this flower diagram is known as _____.

- a. fertilization
- b. self-pollination



3 In _____
the _____



PREVIEW

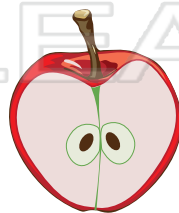
4 Please [Sign In](#) or [Sign Up](#) to download the printable version of this worksheet

- a. surface of the cells are dry and the stomates are closed
- b. cells are dry and the stomates are open
- c. surface of these cells are moist and the stomates are open

5 Fill in the blank.

In flowering plants, the ripened ovary develops into a

_____ fruit _____.



tropism?

- a. An apple develops from a flower.
- b. A stem bends towards the light.
- c. Oxygen diffuses out of a leaf.

10 The loss of water through plant leaves is known as _____.

- a. capillary action
- b. root pressure
- c. transpiration

