



Name _____ Class _____ Date _____

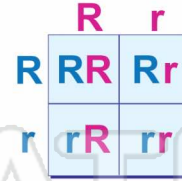
1 _____ is the **passing of traits or characteristics** from one generation to the next.

- A Cross breeding
- B Codominance
- C Dominance
- D Heredity



2 A **lowercase letter** in a Punnett square represents a _____ allele.

- A dominant
- B codominant
- C multiple
- D recessive



3 Which of the following is a **heterozygous genotype** that would show a **dominant phenotype**?

- A RR



4 If Mendel crossed a **true-breeding tall** plant (**TT**) with a **true-breeding short** plant (**tt**), what would the offspring look like?



5

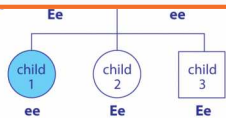


PREVIEW

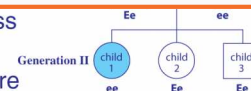
Please [Sign In](#) or [Sign Up](#) to download the printable version of this worksheet

7

- child 3
- C mother, child 1, and child 2
 - D mother only



- B purebred cross
- C pedigree
- D Punnett square



9 Both **alleles** are always expressed for **codominant genes**.

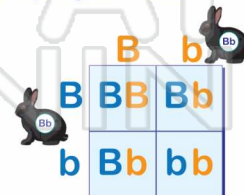
True or False?

- True
- False



10 In this cross, what is the **probability** that the offspring will have **black fur**?

- A 100%
- B 75%
- C 50%
- D 25%





Name _____ Class _____ Date _____

1 _____ is the **passing of traits or characteristics** from one generation to the next.

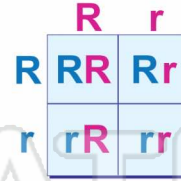
- A Cross breeding
- B Codominance
- C Dominance
- D Heredity



D

2 A **lowercase letter** in a Punnett square represents a _____ allele.

- A dominant
- B codominant
- C multiple
- D recessive



D

3 Which of the following is a **heterozygous genotype** that would show a **dominant phenotype**?

- A RR



C

4 If Mendel crossed a **true-breeding tall** plant (TT) with a **true-breeding short** plant (tt), what would the offspring look like?



C



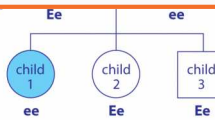
B

PREVIEW

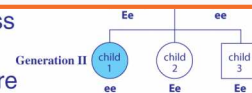
Please [Sign In](#) or [Sign Up](#) to download the printable version of this worksheet

7

child 3
C mother, child 1, and child 2
D mother only



- B purebred cross
- C pedigree
- D Punnett square



C

9 Both alleles are always expressed for **codominant genes**.

True or False?

- True
- False



A

10 In this cross, what is the **probability** that the offspring will have **black fur**?

- A 100%
- B 75%
- C 50%
- D 25%



B