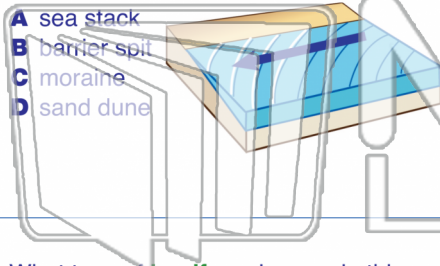




Name _____ Class _____ Date _____

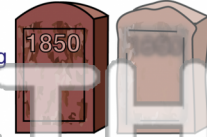
1 A _____ is a piece of land formed by **longshore wave currents**.

- A sea stack
- B barrier spit
- C moraine
- D sand dune



2 Which of the following is an example of the **chemical weathering** of rock?

- A blowing sand
- B freezing and thawing
- C acid rain
- D burrowing animals



3 What type of **landform** is seen in this image?



4 **Wind deposition** is responsible for the formation of _____ and _____.



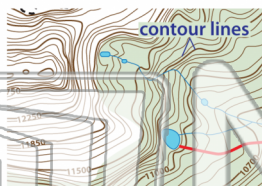
PREVIEW

Please [Sign In](#) or [Sign Up](#) to download the printable version of this worksheet

7 connect areas with **similar climates**.

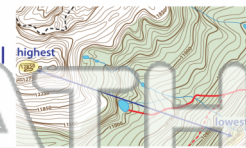
True or false?

- A True
- B False



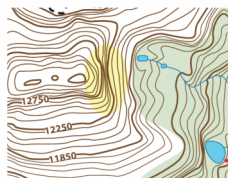
highest and lowest elevation points on a topographic map is called the _____.

- A contour interval
- B legend
- C relief
- D slope distance



9 Contour lines that are **spaced close together** indicate that the surface is _____.

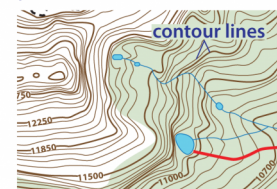
- A nearly flat
- B steep
- C moving toward a depression
- D gently sloping



10 Contour lines **never cross** on a topographic map.

True or false?

- A True
- B False

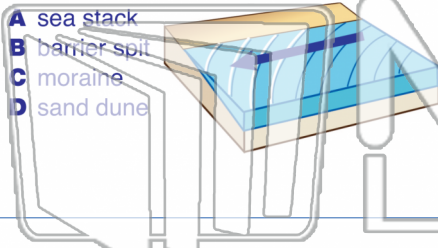




Name _____ Class _____ Date _____

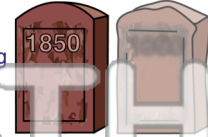
1 A _____ is a piece of land formed by **longshore wave currents**.

- A sea stack
- B barrier spit
- C moraine
- D sand dune



2 Which of the following is an example of the **chemical weathering** of rock?

- A blowing sand
- B freezing and thawing
- C acid rain
- D burrowing animals



3 What type of **landform** is seen in this image?



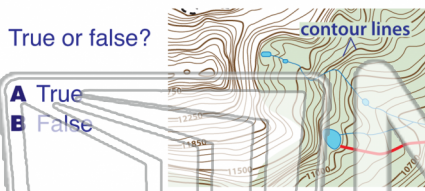
4 **Wind deposition** is responsible for the formation of _____ and _____.



PREVIEW

Please [Sign In](#) or [Sign Up](#) to download the printable version of this worksheet

7 Connect areas with **similar climates**.



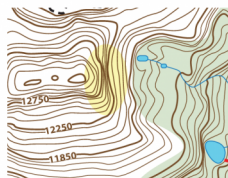
- True or false?
- A True
 - B False

8 The **highest and lowest elevation points** on a topographic map is called the _____.

- A contour interval
- B legend
- C relief
- D slope distance

9 Contour lines that are **spaced close together** indicate that the surface is _____.

- A nearly flat
- B steep
- C moving toward a depression
- D gently sloping



10 Contour lines **never cross** on a topographic map.

True or false?

- A True
- B False

