



Name _____ Class _____ Date _____

1

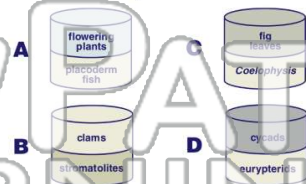
Layers of volcanic ash often serve as useful **geologic time markers** because ash layers usually



- A deposit quickly over a wide area
- B are older than the surrounding rock
- C can be sampled easily
- D darken with age

2

Which **bedrock drill core** contains fossils of the life-form that lived **earliest** in the Earth's history?



- A flowering plants, phleoderm fish
- B clams, stromatolites
- C fig, Coelophysis
- D cycads, eurypterids

3

According to **fossil evidence**, most plants and animals that lived on the Earth in the geologic past have



4

In which way are **index fossils** and **volcanic ash deposits** similar?



- A Both can usually

5



PREVIEW

Please [Sign In](#) or [Sign Up](#) to download the printable version of this worksheet

7

- A trilobite
- B human
- C coelophysis
- D stromatolite

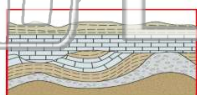


- A gabbro
- B quartzite
- C limestone
- D metaconglomerate



9

Unconformities (buried erosional surfaces) provide evidence that



- A many life-forms have become extinct
- B faults are older than the rock in which they are found
- C part of the geologic record has been destroyed
- D metamorphic rocks have formed from sedimentary rocks

10

Compared to the length of time for the **first half-life** of a sample of a radioactive isotope, the length of time for the **second half-life** is

- A less
- B greater
- C the same



Name _____ Class _____ Date _____

1

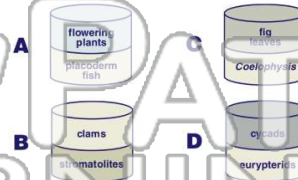
Layers of volcanic ash often serve as useful **geologic time markers** because ash layers usually



- A deposit quickly over a wide area
- B are older than the surrounding rock
- C can be sampled easily
- D darken with age

2

Which **bedrock drill core** contains fossils of the life-form that lived **earliest** in the Earth's history?



B

3

According to **fossil evidence**, most plants and animals that lived on the Earth in the geologic past have



4

In which way are **index fossils** and **volcanic ash deposits** similar?



- A Both can usually

5



PREVIEW

Please [Sign In](#) or [Sign Up](#) to download the printable version of this worksheet

7

- A trilobite
- B human
- C coelophysis
- D stromatolite

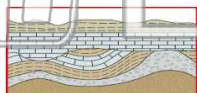


- A gabbro
- B quartzite
- C limestone
- D metaconglomerate



9

Unconformities (buried erosional surfaces) provide evidence that



- A many life-forms have become extinct
- B faults are older than the rock in which they are found
- C part of the geologic record has been destroyed
- D metamorphic rocks have formed from sedimentary rocks

10

Compared to the length of time for the **first half-life** of a sample of a radioactive isotope, the length of time for the **second half-life** is

- A less
- B greater
- C the same