

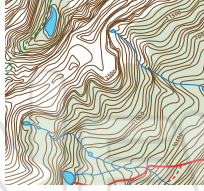


# Maps as Models of Earth

Name \_\_\_\_\_ Class \_\_\_\_\_ Date \_\_\_\_\_

1 **Topographic maps** show the topography of a mapped area. **Topography** refers to \_\_\_\_\_. Circle the answer letter.

- a. only human structures
- b. only mountains & lakes
- c. all natural & constructed features on Earth's surface



6 A map is a flat, two-dimensional picture of the spherical Earth. When oceans and landmasses are **projected** onto a **cylinder of paper**, a \_\_\_\_\_ map is created.

- a. Mercator projection
- b. topo relief
- c. conic projection



2 By definition, topography is the difference in the altitude between the high and low parts of a land surface and overall form of the land. The **difference in altitude** from the base of a



7 Fill in the blank.

Lines of \_\_\_\_\_ are lines on a globe that run north and south and





## PREVIEW

Please [Sign In](#) or [Sign Up](#) to download the printable version of this worksheet

3 M  
ir  
(2  
T  
s  
loc

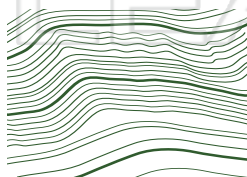
4 T  
E  
c

- a. the highest & lowest points in an area
- b. points of equal elevation
- c. the peaks of mountains and hills

- c. the equator
- d. the South Pole

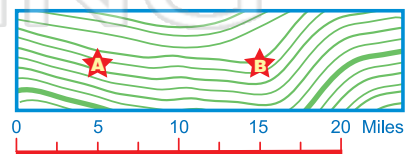
5 When **contour intervals** are **very close** to one another on a topographic map, the **topography** is \_\_\_\_\_.

- flat                      sloping
- hilly                      steep



10 The scale of a map shows the relationship of distances on the map with those on Earth's surface. Using this scale, **how many miles** are **between** points A and B?

- 5            10
- 15         17



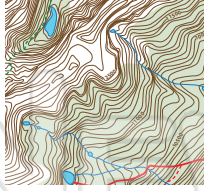


# Maps as Models of Earth - Answer Key

Name \_\_\_\_\_ Class \_\_\_\_\_ Date \_\_\_\_\_

1 **Topographic maps** show the topography of a mapped area. **Topography** refers to \_\_\_\_\_. Circle the answer letter.

- a. only human structures
- b. only mountains & lakes
- c. all natural & constructed features on Earth's surface



6 A map is a flat, two-dimensional picture of the spherical Earth. When oceans and landmasses are **projected** onto a **cylinder of paper**, a \_\_\_\_\_ map is created.

- a. Mercator projection
- b. topo relief
- c. conic projection



2 By definition, topography is the difference in the altitude between the high and low parts of a land surface and overall form of the land. The **difference in altitude** from the base of a



7 Fill in the blank.

Lines of longitude are lines on a globe that run north and south and





## PREVIEW

Please [Sign In](#) or [Sign Up](#) to download the printable version of this worksheet

3 M  
ir  
(2  
T  
s  
loc

4 T  
E  
c

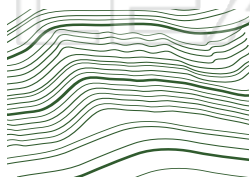
a. the highest & lowest points in an area

b. points of equal elevation

c. the peaks of mountains and hills

5 When **contour intervals** are **very close** to one another on a topographic map, the **topography** is \_\_\_\_\_.

- flat
- sloping
- hilly
- steep



10 The scale of a map shows the relationship of distances on the map with those on Earth's surface. Using this scale, **how many miles** are **between** points A and B?

- 5
- 10
- 15
- 17

