



Name _____ Class _____ Date _____

1

A stream with a **water velocity** of 150 centimeters per second **decreases** to a velocity of 100 centimeters per second. Which **sediment size** will most likely be deposited?

- A pebbles
- B sand
- C boulders
- D cobbles



2

During the intrusion of the Palisades Sill, **contact metamorphism** **changed sandstone and shale into**

- A diorite
- B marble
- C limestone
- D hornfels



3

Which **process** most likely formed a layer of the sedimentary rock, **gypsum**?

- A precipitation from seawater



4

Which **nonfoliated rock** forms only in a zone of **contact metamorphism**?

- A conglomerate



5



PREVIEW

Please [Sign In](#) or [Sign Up](#) to download the printable version of this worksheet

7

- A precipitation of minerals from evaporating seawater
- B metamorphism of unmelted rock material
- C deposition of quartz sand
- D explosive eruption of lava from a volcano



and **feldspar** arranged in coarse-grained bands.

Which rock is shown?

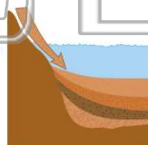
- A slate
- B dunite
- C gneiss
- D quartzite



9

Which property best describes a rock which has **formed from sediments**?

- A crystalline structure
- B distorted structure
- C banding or zoning of minerals
- D fragmental particles arranged in layers



10

Which igneous rock, when weathered, could **produce sediment** composed of the minerals **potassium feldspar, quartz, and amphibole**?

- A gabbro
- B granite
- C andesite
- D basalt





Name _____ Class _____ Date _____

1

A stream with a **water velocity** of 150 centimeters per second **decreases** to a velocity of 100 centimeters per second. Which **sediment size** will most likely be deposited?

- A pebbles
- B sand
- C boulders
- D cobbles



2

During the intrusion of the Palisades Sill, **contact metamorphism** **changed sandstone and shale into**

- A diorite
- B marble
- C limestone
- D hornfels



D

3

Which **process** most likely formed a layer of the sedimentary rock, **gypsum**?

- A precipitation from seawater



4

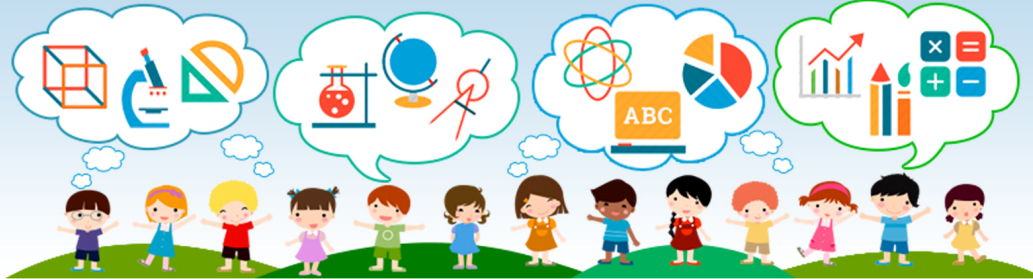
Which **nonfoliated rock** forms only in a zone of **contact metamorphism**?

- A conglomerate



B

5



PREVIEW

Please [Sign In](#) or [Sign Up](#) to download the printable version of this worksheet

C

7

- A precipitation of minerals from evaporating seawater
- B metamorphism of unmelted rock material
- C deposition of quartz sand
- D explosive eruption of lava from a volcano

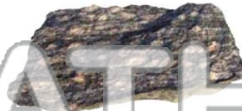


D

and **feldspar** arranged in coarse-grained bands.

Which rock is shown?

- A slate
- B dunite
- C gneiss
- D quartzite

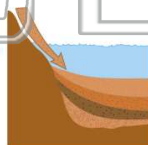


C

9

Which property best describes a rock which has **formed from sediments**?

- A crystalline structure
- B distorted structure
- C banding or zoning of minerals
- D fragmental particles arranged in layers



D

10

Which igneous rock, when weathered, could **produce sediment** composed of the minerals **potassium feldspar, quartz, and amphibole**?

- A gabbro
- B granite
- C andesite
- D basalt



B