

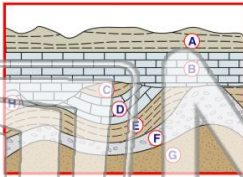


Name \_\_\_\_\_ Class \_\_\_\_\_ Date \_\_\_\_\_

1

The **folding** of rock layers **G through C** was most likely caused by

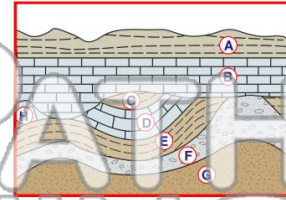
- A erosion of overlying sediments
- B contact metamorphism
- C the collision of lithospheric plates
- D the extrusion of igneous rock



2

Which two letters represent **bedrock of the same age**?

- A A and E
- B B and D
- C F and G
- D D and H



3

Which property would best **distinguish** sediment deposited by a **river** from sediment deposited by a **glacier**?

4

What is the **origin** of **fine-grained igneous rock**?

- A lava that cooled slowly



5

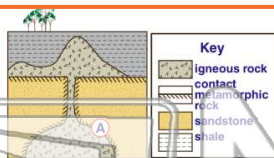


## PREVIEW

Please [Sign In](#) or [Sign Up](#) to download the printable version of this worksheet

7

- A shale
- B sandstone
- C igneous rock
- D rock at location A



- A land-derived sedimentary rock
- B chemically formed sedimentary rock
- C foliated metamorphic rock
- D nonfoliated metamorphic rock

9

The **edges** of most **lithospheric plates** are characterized by

- A reversed magnetic orientation
- B unusually rapid radioactive decay
- C frequent volcanic activity
- D low P-wave and high S-wave velocity

10

Which rock forms by the **recrystallization of unmelted rock material** under conditions of high temperature and pressure?

- A granite
- B gneiss
- C rock gypsum
- D bituminous coal





Name \_\_\_\_\_ Class \_\_\_\_\_ Date \_\_\_\_\_

1 The **folding** of rock layers **G through C** was most likely caused by

- A erosion of overlying sediments
- B contact metamorphism
- C the collision of lithospheric plates
- D the extrusion of igneous rock

2 Which two letters represent **bedrock of the same age**?

- A A and E
- B B and D
- C F and G
- D D and H

3 Which property would best **distinguish** sediment deposited by a **river** from sediment deposited by a **glacier**?

4 What is the **origin** of **fine-grained igneous rock**?

A lava that cooled slowly

5

**PREVIEW**

Please [Sign In](#) or [Sign Up](#) to download the printable version of this worksheet

7

- A shale
- B sandstone
- C igneous rock
- D rock at location A

- A land-derived sedimentary rock
- B chemically formed sedimentary rock
- C foliated metamorphic rock
- D nonfoliated metamorphic rock

9 The **edges** of most **lithospheric plates** are characterized by

- A reversed magnetic orientation
- B unusually rapid radioactive decay
- C frequent volcanic activity
- D low P-wave and high S-wave velocity

10 Which rock forms by the **recrystallization of unmelted rock material** under conditions of high temperature and pressure?

- A granite
- B gneiss
- C rock gypsum
- D bituminous coal