



Name \_\_\_\_\_ Class \_\_\_\_\_ Date \_\_\_\_\_

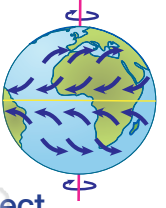
1 As water evaporates from oceans, lakes and rivers, the water vapor is held in the air. The amount of water vapor in the air is called \_\_\_\_\_. Circle the answer letter.

- a. humidity
- b. relative humidity
- c. dew point



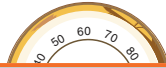
6 Why do global winds curve rather than travel in a straight line?

- a. because Earth is round
- b. because of mountains and valleys
- c. because of the Coriolis effect



2 The measured humidity in Chicago on a given day is 24 g/m<sup>3</sup>. The maximum water vapor it could hold that day is 72 g/m<sup>3</sup>. What is the relative humidity?

Circle the answer.



7 Which of the following accurately describes the difference between cumulus clouds and cirrus clouds?

- a. Cumulus form at high altitudes; cirrus form at low altitudes.

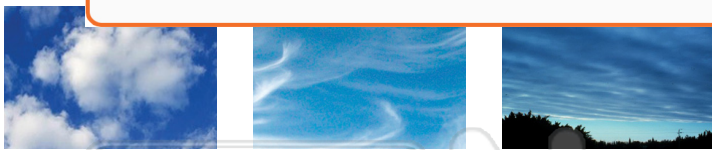
3 For what purpose do scientists use models?



## PREVIEW

Please [Sign In](#) or [Sign Up](#) to download the printable version of this worksheet

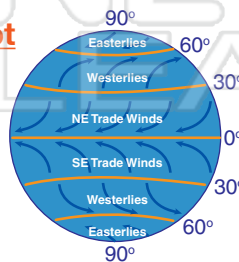
4 Clouds are made of tiny water droplets or ice crystals. They form when water vapor in the air condenses. What are the conditions that cause clouds to form?



- a. low because warm air rises
- b. low because warm air sinks
- c. high because warm air rises

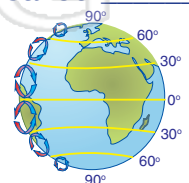
5 Which of the following is not a global wind?

- a. trade winds
- b. polar easterlies
- c. jet streams



10 The circular motion created by belts of cold air sinking and warm air rising creates a phenomenon called \_\_\_\_\_.

- a. the Coriolis effect
- b. convection cells
- c. trade winds





# Weather - Answer Key

Name \_\_\_\_\_ Class \_\_\_\_\_ Date \_\_\_\_\_

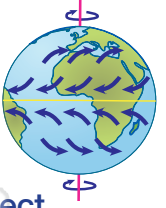
1 As water evaporates from oceans, lakes and rivers, the water vapor is held in the air. The amount of water vapor in the air is called \_\_\_\_\_. Circle the answer letter.

- a. humidity
- b. relative humidity
- c. dew point



6 Why do global winds curve rather than travel in a straight line?

- a. because Earth is round
- b. because of mountains and valleys
- c. because of the Coriolis effect



2 The measured humidity in Chicago on a given day is  $24 \text{ g/m}^3$ . The maximum water vapor it could hold that day is  $72 \text{ g/m}^3$ . What is the relative humidity? Circle the answer.



7 Which of the following accurately describes the difference between cumulus clouds and cirrus clouds?

- a. Cumulus form at high altitudes; cirrus form at low altitudes.

3 F  
V  
it  
to  
c  
s



## PREVIEW

Please [Sign In](#) or [Sign Up](#) to download the printable version of this worksheet

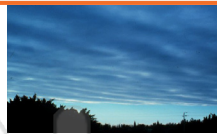
4 c  
o  
v



cumulus



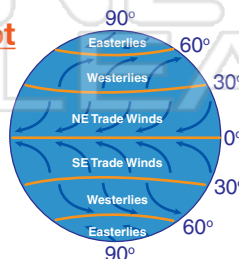
cirrus



stratus

5 Which of the following is not a global wind?

- a. trade winds
- b. polar easterlies
- c. jet streams



10 The circular motion created by belts of cold air sinking and warm air rising creates a phenomenon called \_\_\_\_\_.

- a. the Coriolis effect
- b. convection cells
- c. trade winds

